

# ANALISIS DE FORMAS ARQUITECTONICAS

## Tema 6.1: ANALISIS CONTEXTO.

Profesor: Luis AGUSTIN.



Escuela de  
Ingeniería y Arquitectura  
Universidad Zaragoza

UNIVERSIDAD  
DE ZARAGOZA



## ANALISIS,

### Análisis de contexto:

- En la obra del arquitecto / En el momento de construcción de la casa.
- Entorno Geográfico.
- Entorno Urbanístico.
- Análisis del emplazamiento:
  - Orografía, urbanización.
  - Orientación, vientos dominantes, vistas, etc.
  - Aproximación, percepción.



## ANALISIS,

### Análisis de contexto:

- En la obra del arquitecto / En el momento de construcción de la casa.
- Entorno Geográfico.
- Entorno Urbanístico.

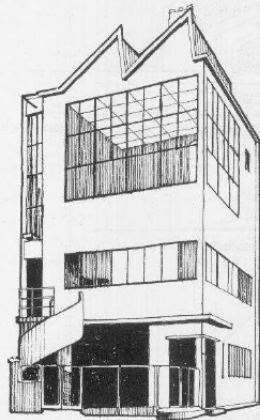
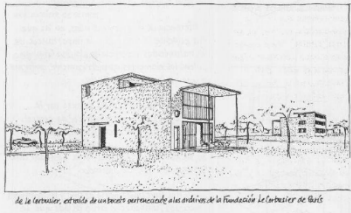


# VIVIENDA-ESTUDIO PARA OZENFANT, 1922

# ANALISIS CONTEXTO

## CONTEXTO DEL AUTOR.

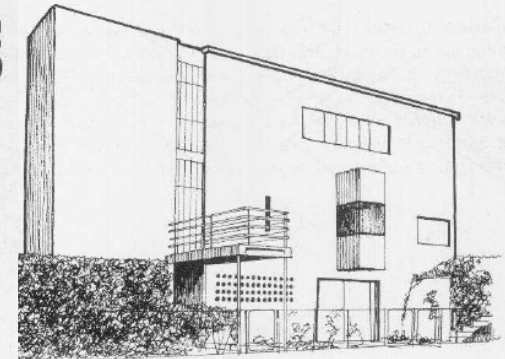
CASA CITROHAN, 1920-1927



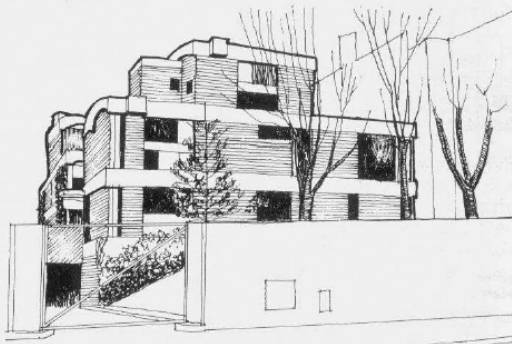
VILLAS LA ROCHE-JEANNERET,  
1923-1925



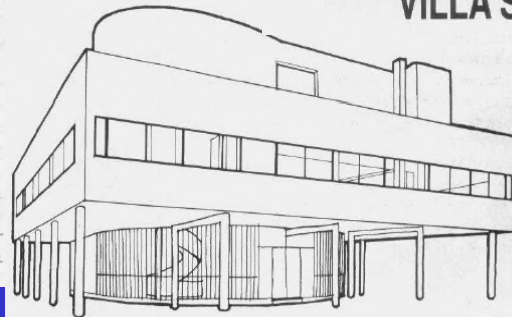
VILLA EN VAUCRESSON, 1922



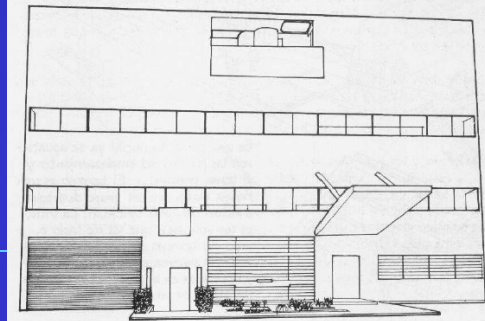
CASAS JAOUËL, 1954-1956



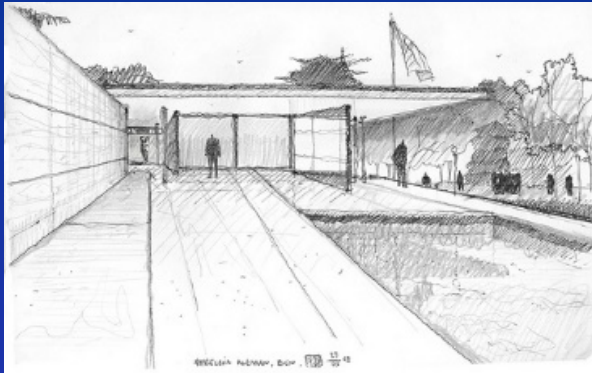
VILLA SAVOYE, 1929-1931



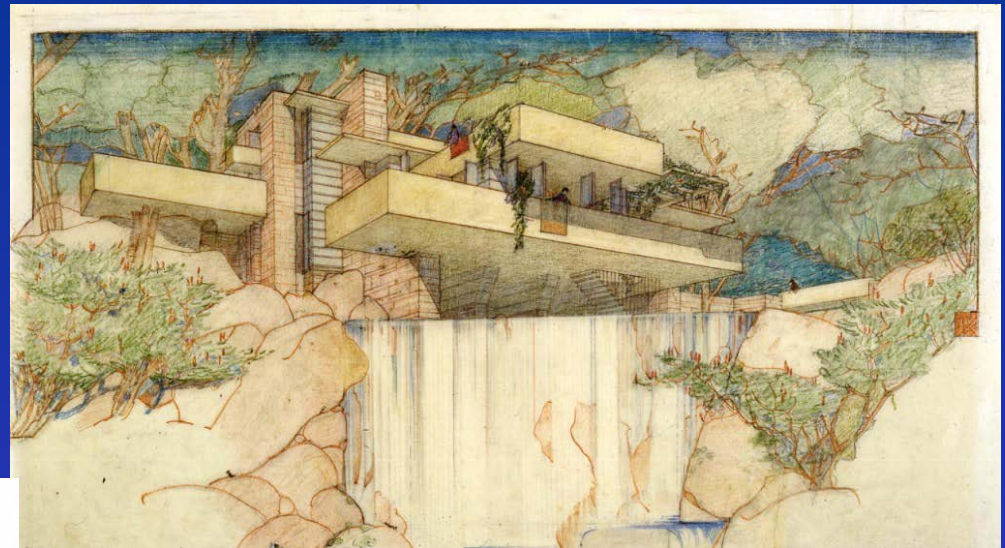
VILLAS STEIN-DE-MONZIE,  
1926-1929







Pavellon de Aleman de Barcelona,  
Mies Van der Rohe 1929



Casa de la Cascada, Frank Lloyd Wright 1937



Casa Steiner, Adolf Loos 1910



Villa Mairea, Alvar Aalto 1939

## CONTEXTO CON OTROS PROYECTOS CONTEMPORANEOS



# CONTEXTO URBANO

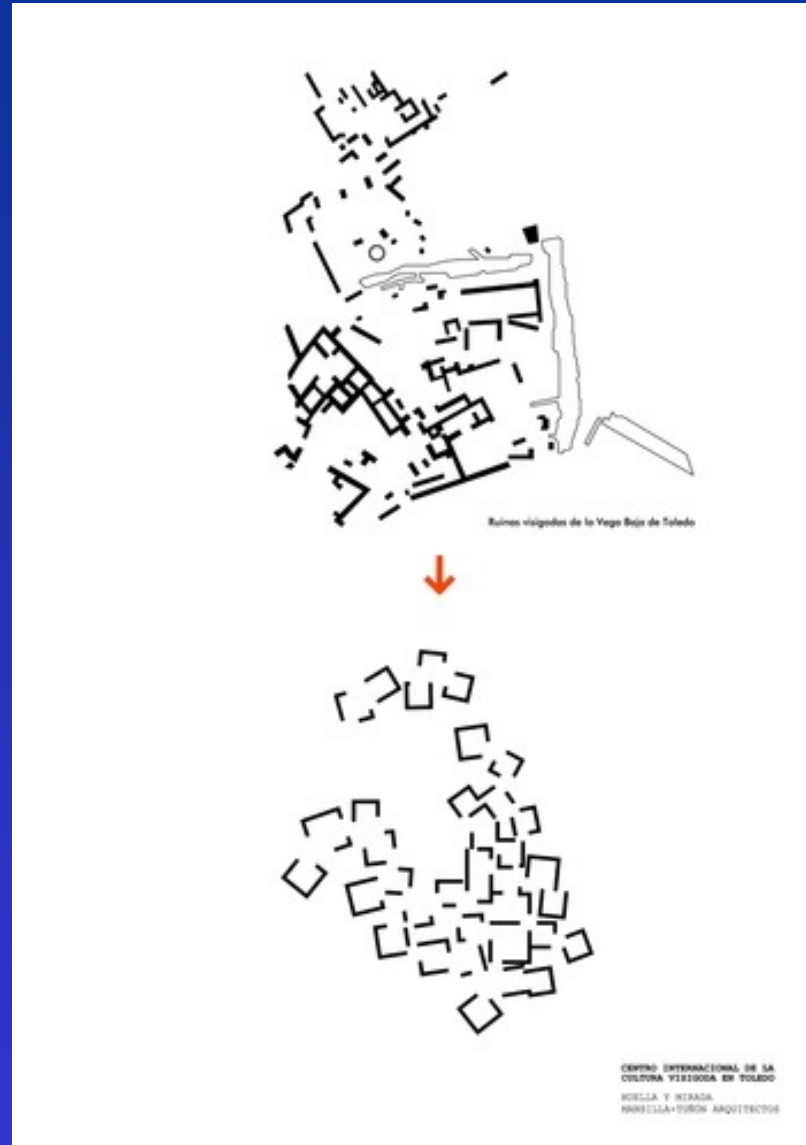
De lo general a lo particular





## Urbanistico

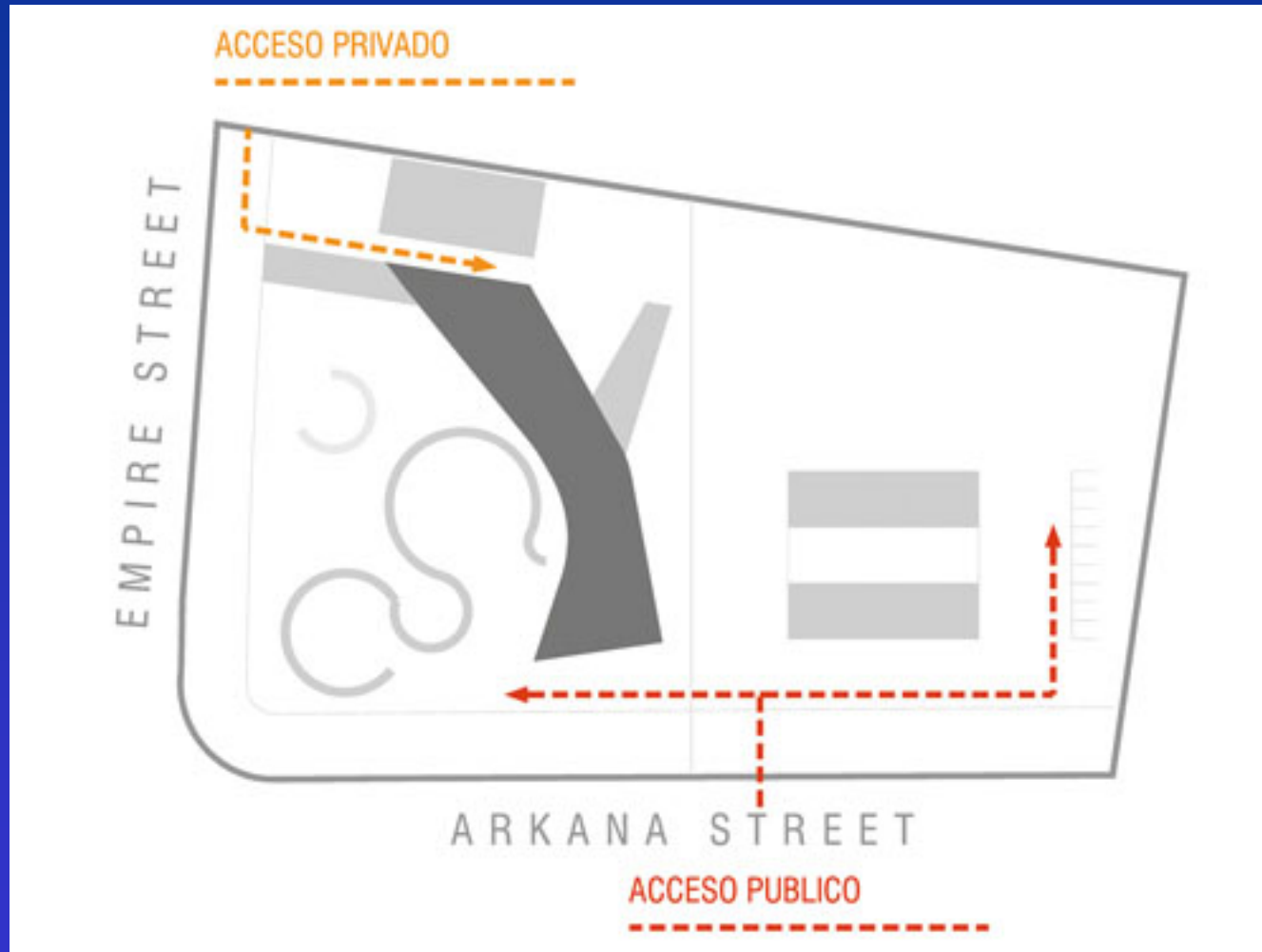




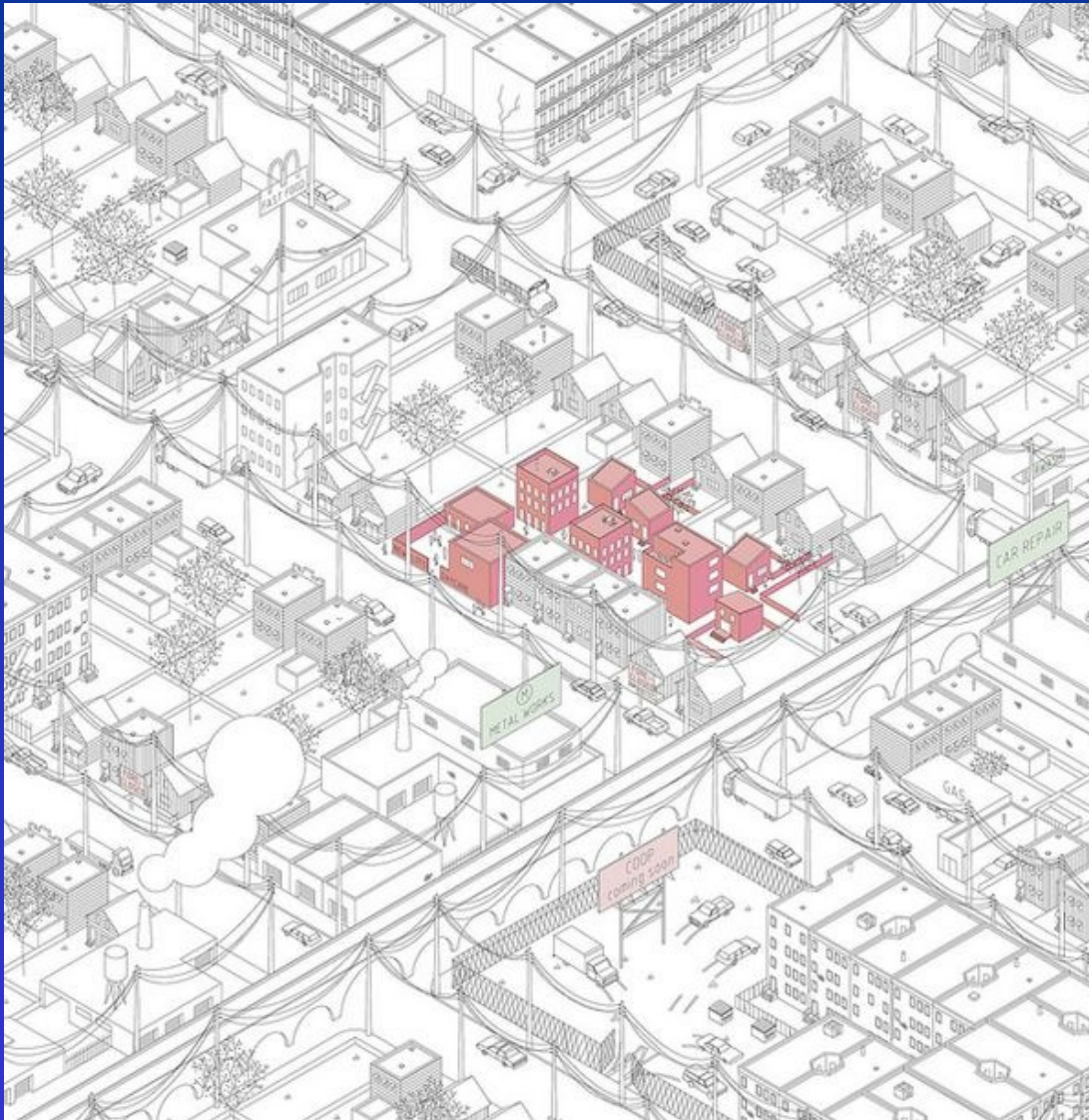
## Urbanistico



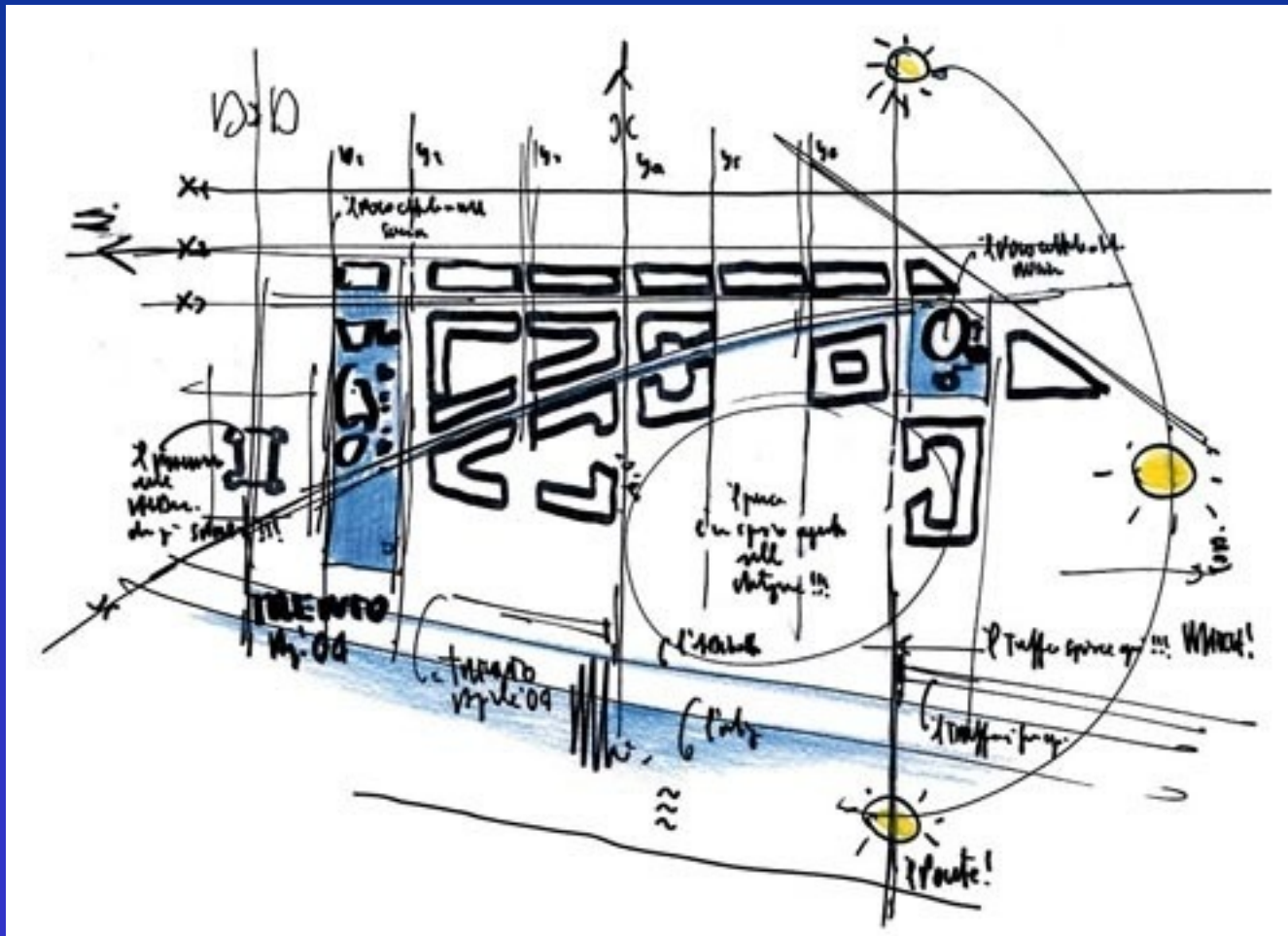
## CONCEPTO

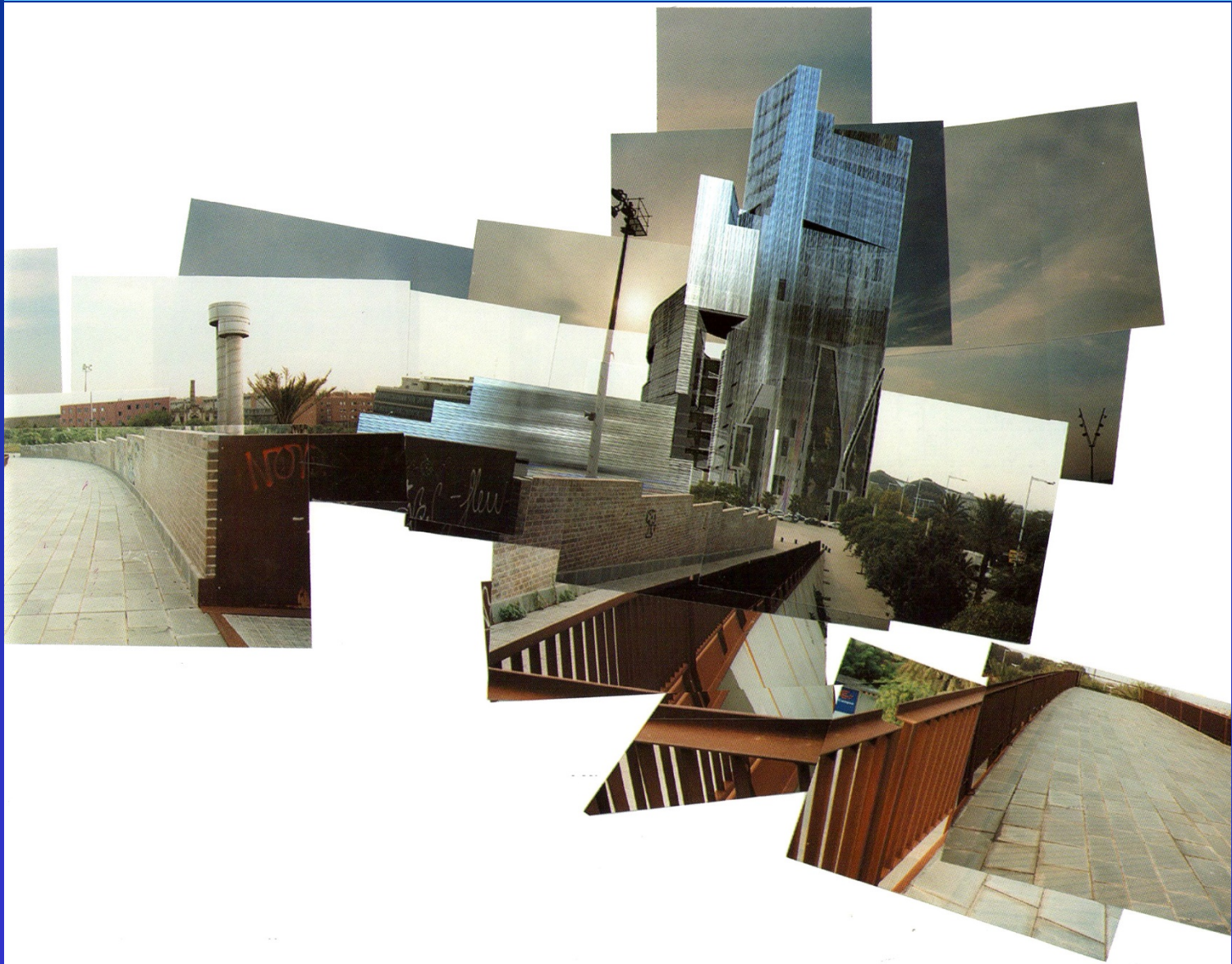








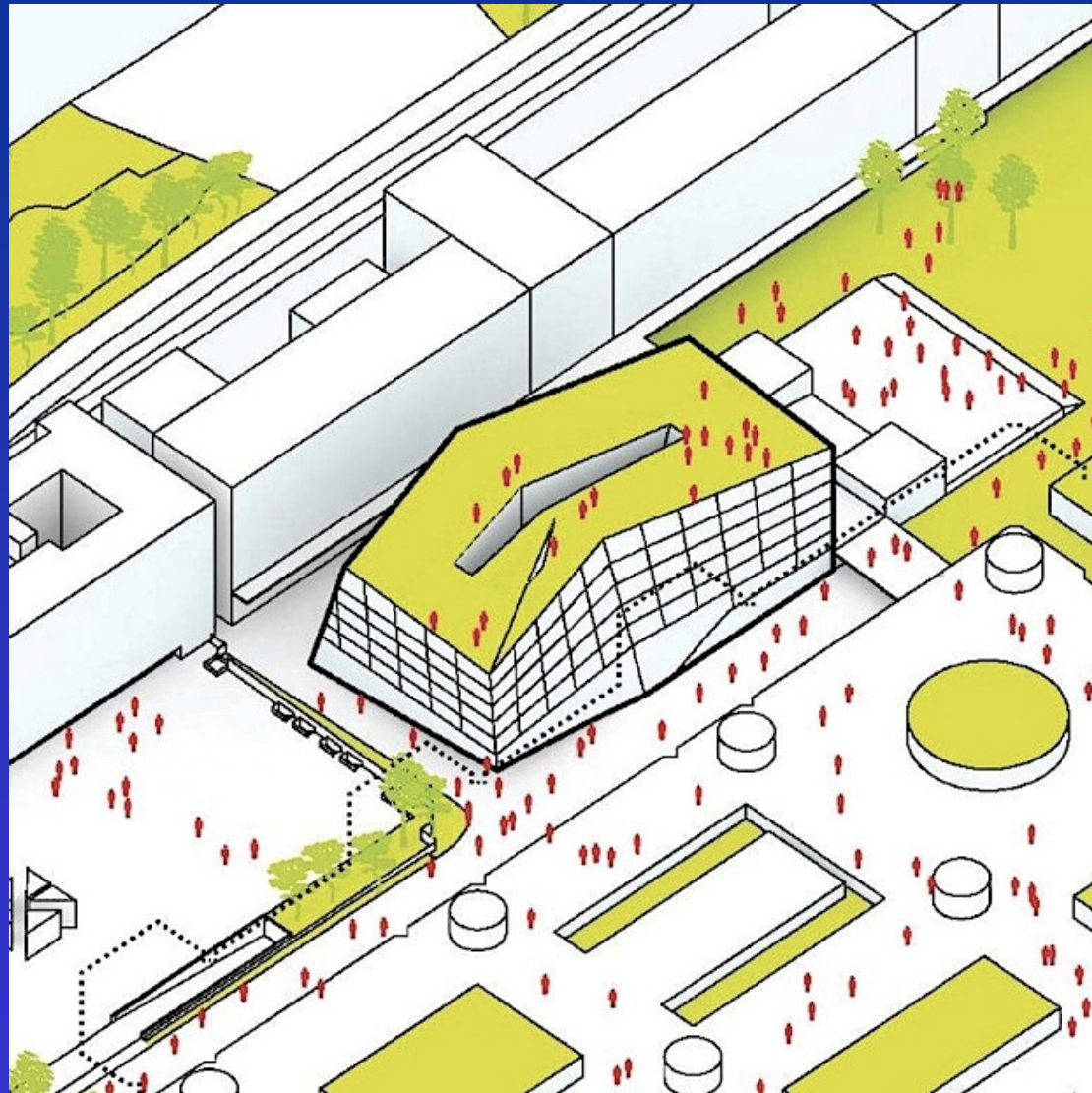


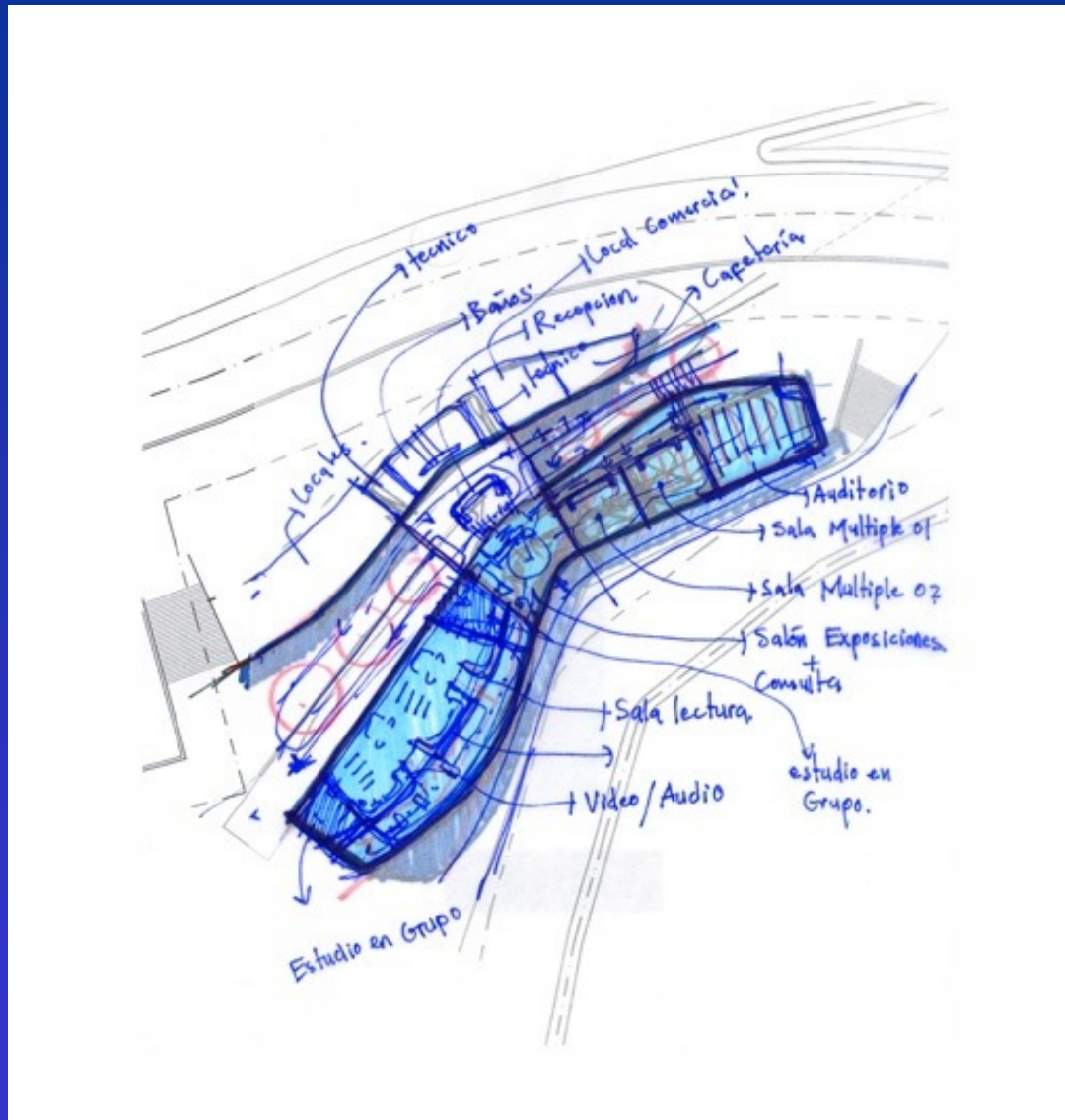


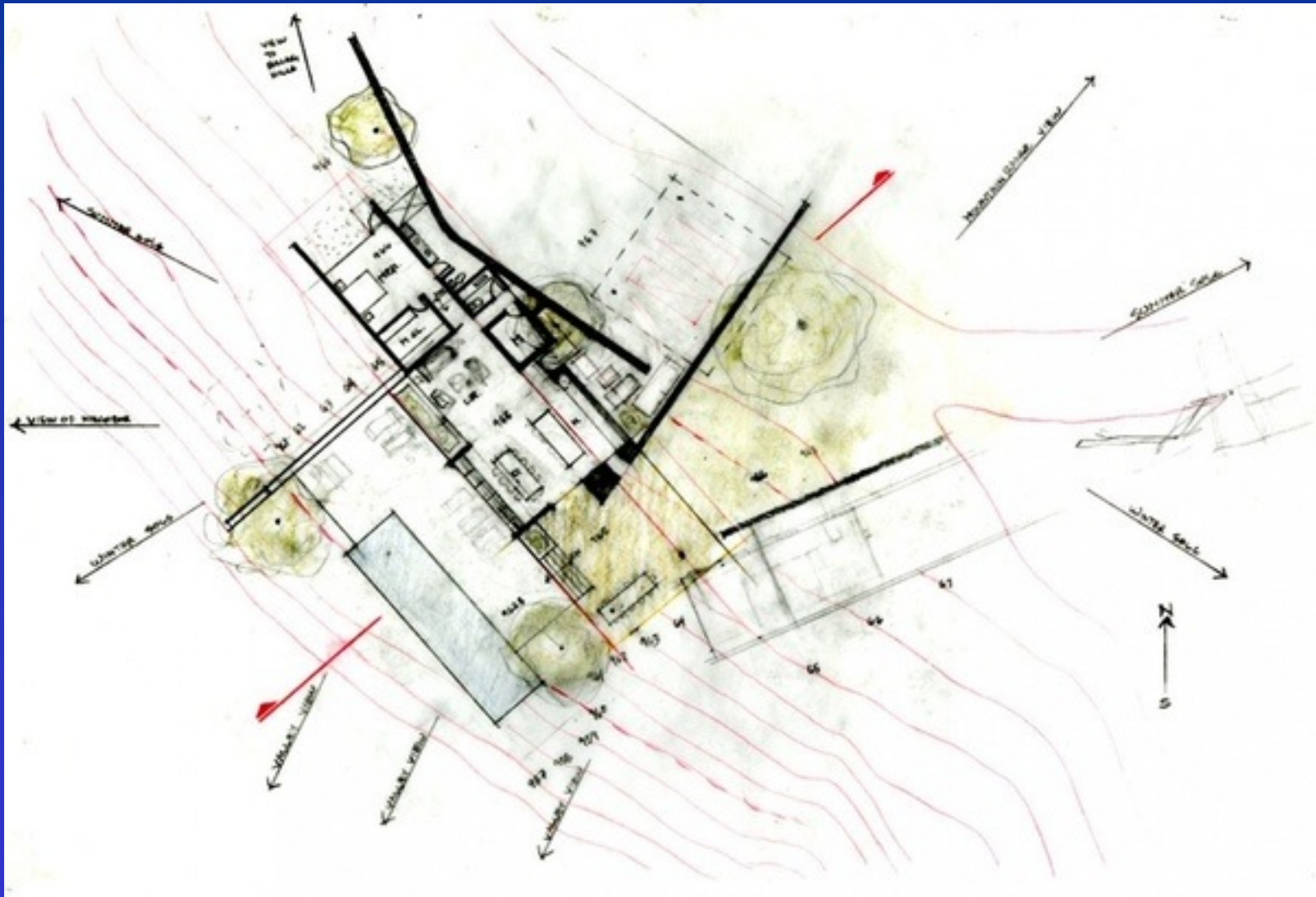
## CONCEPTO



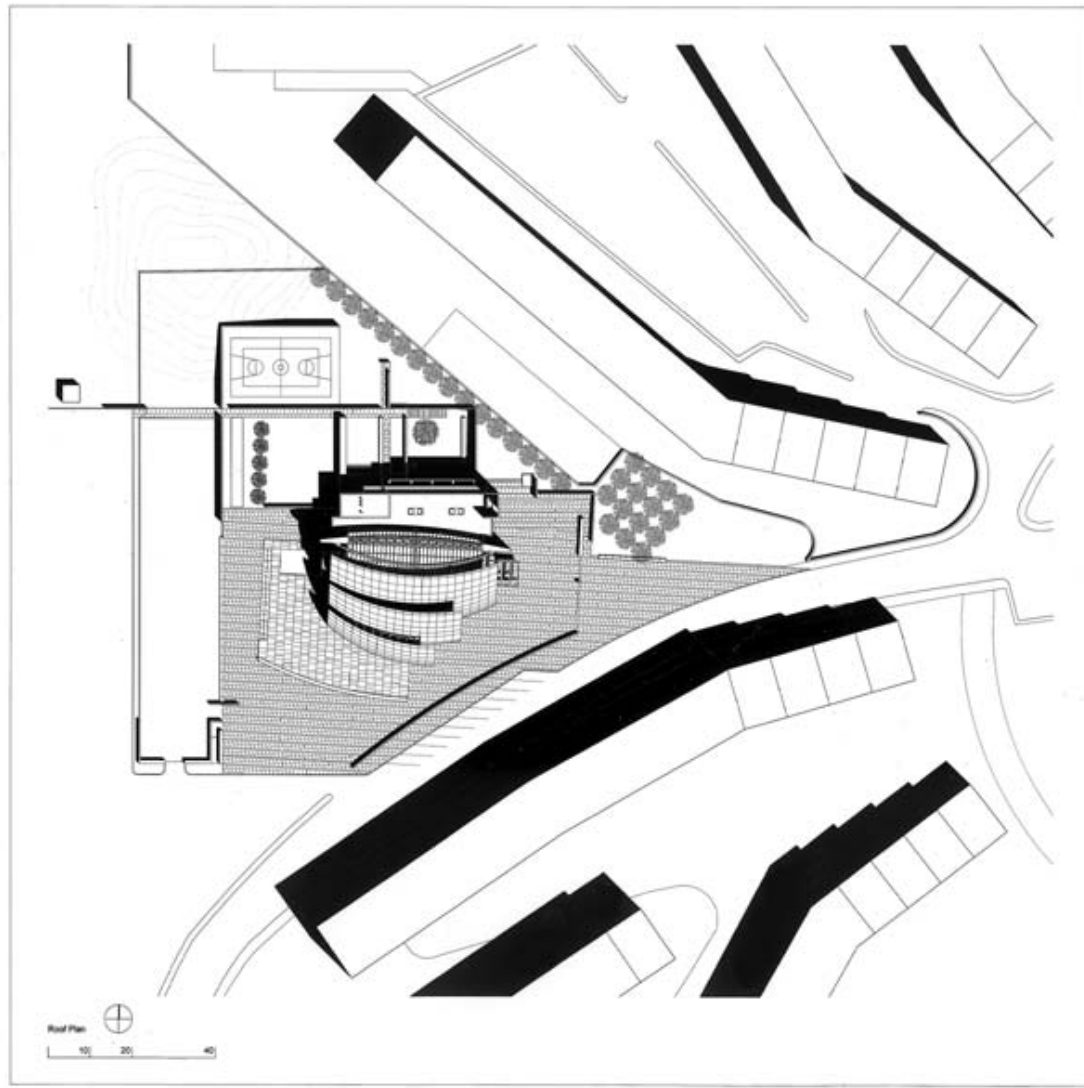




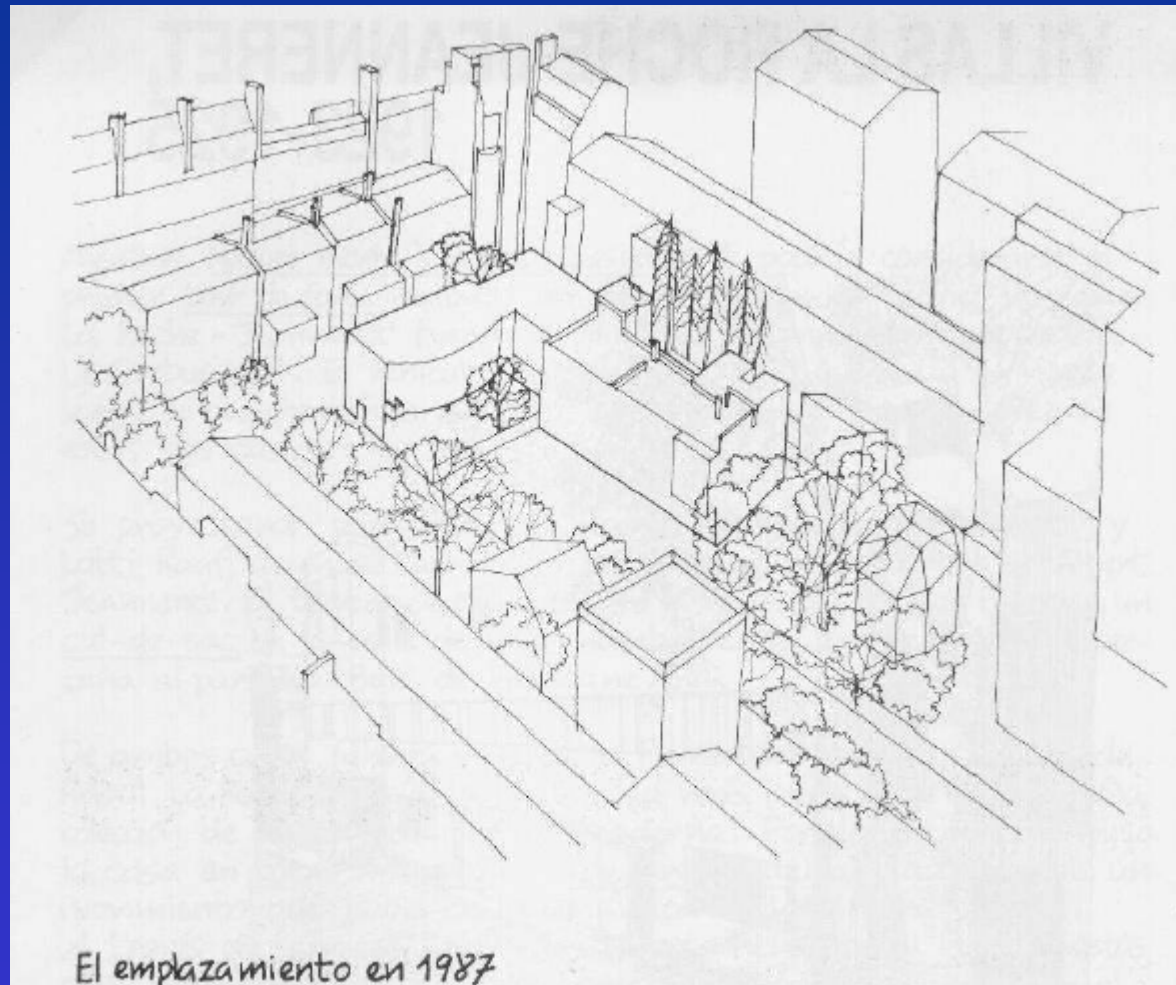




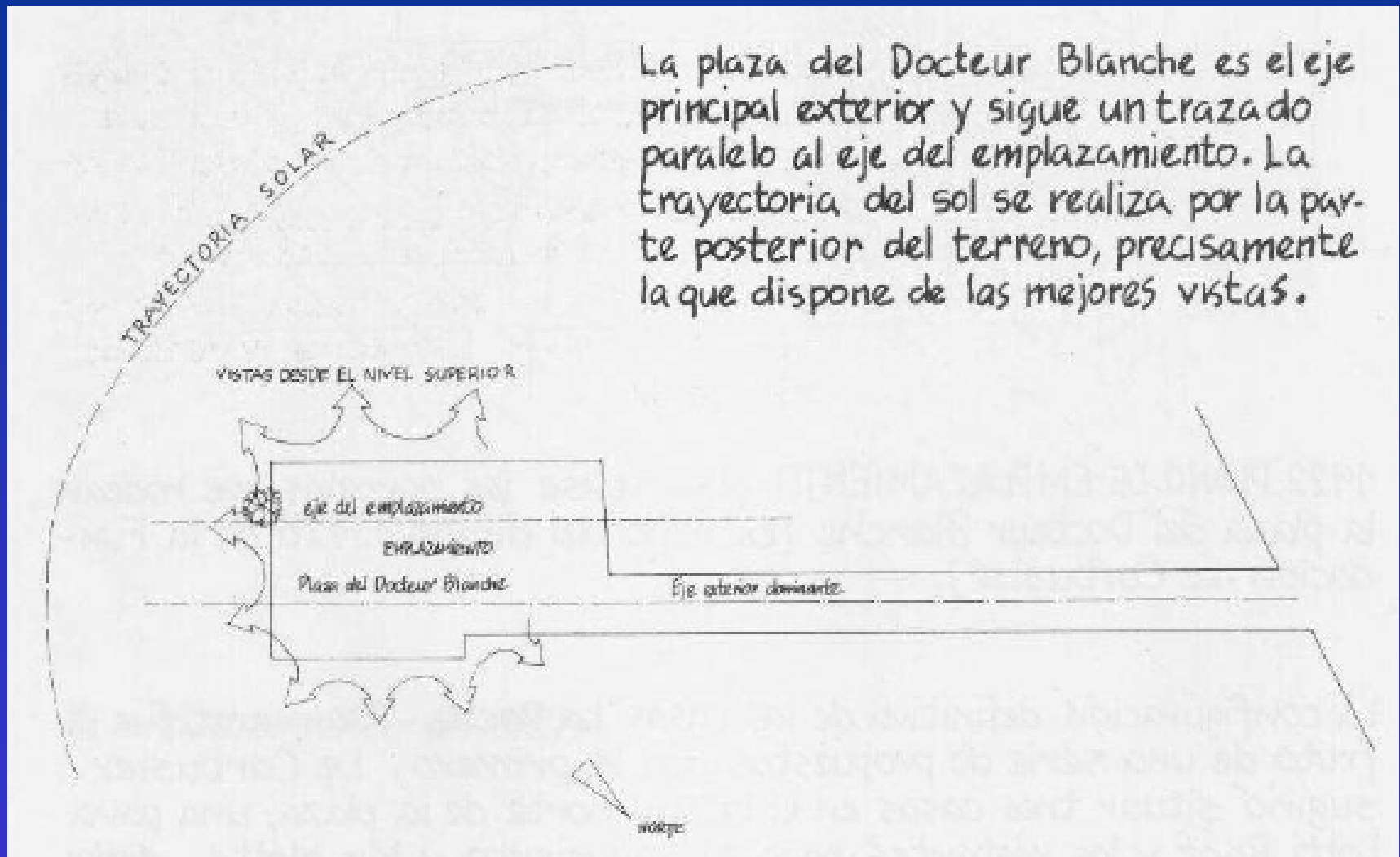


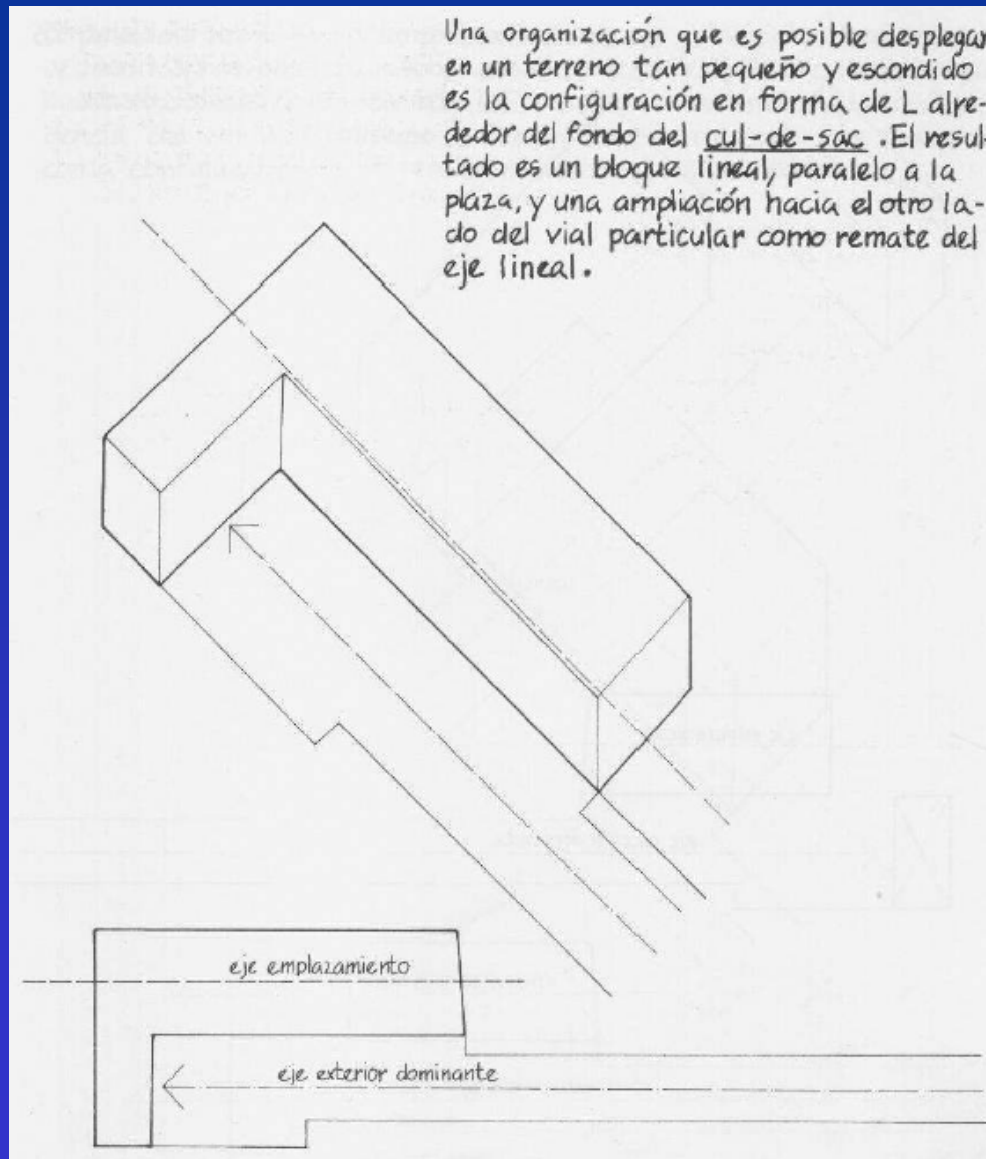


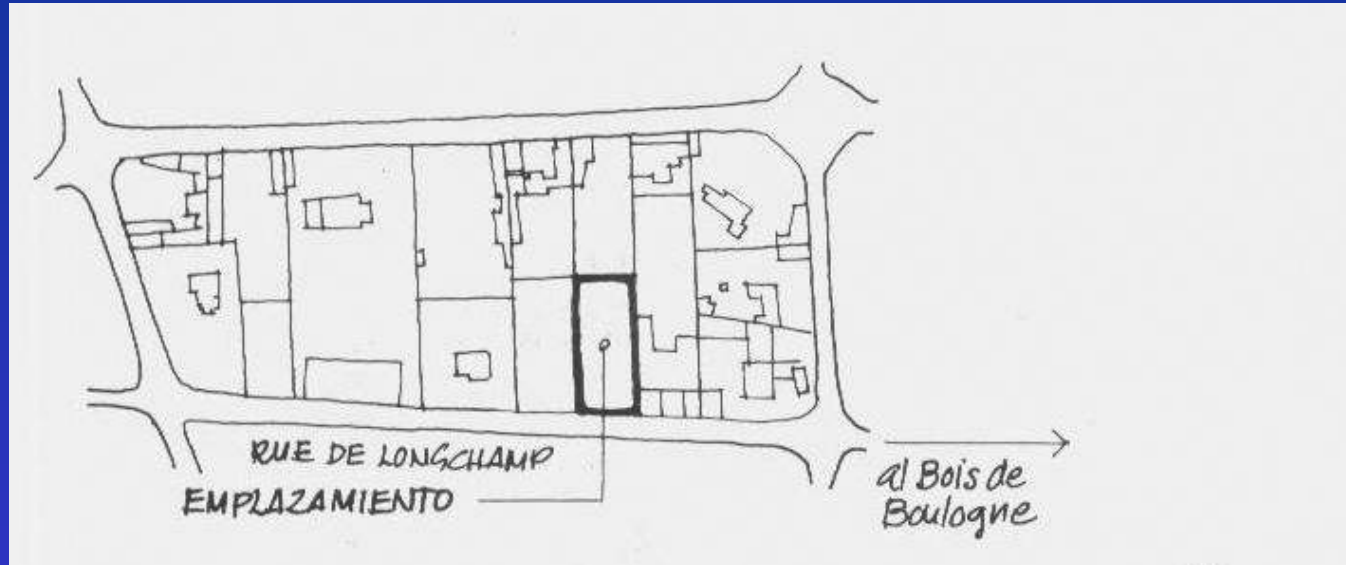


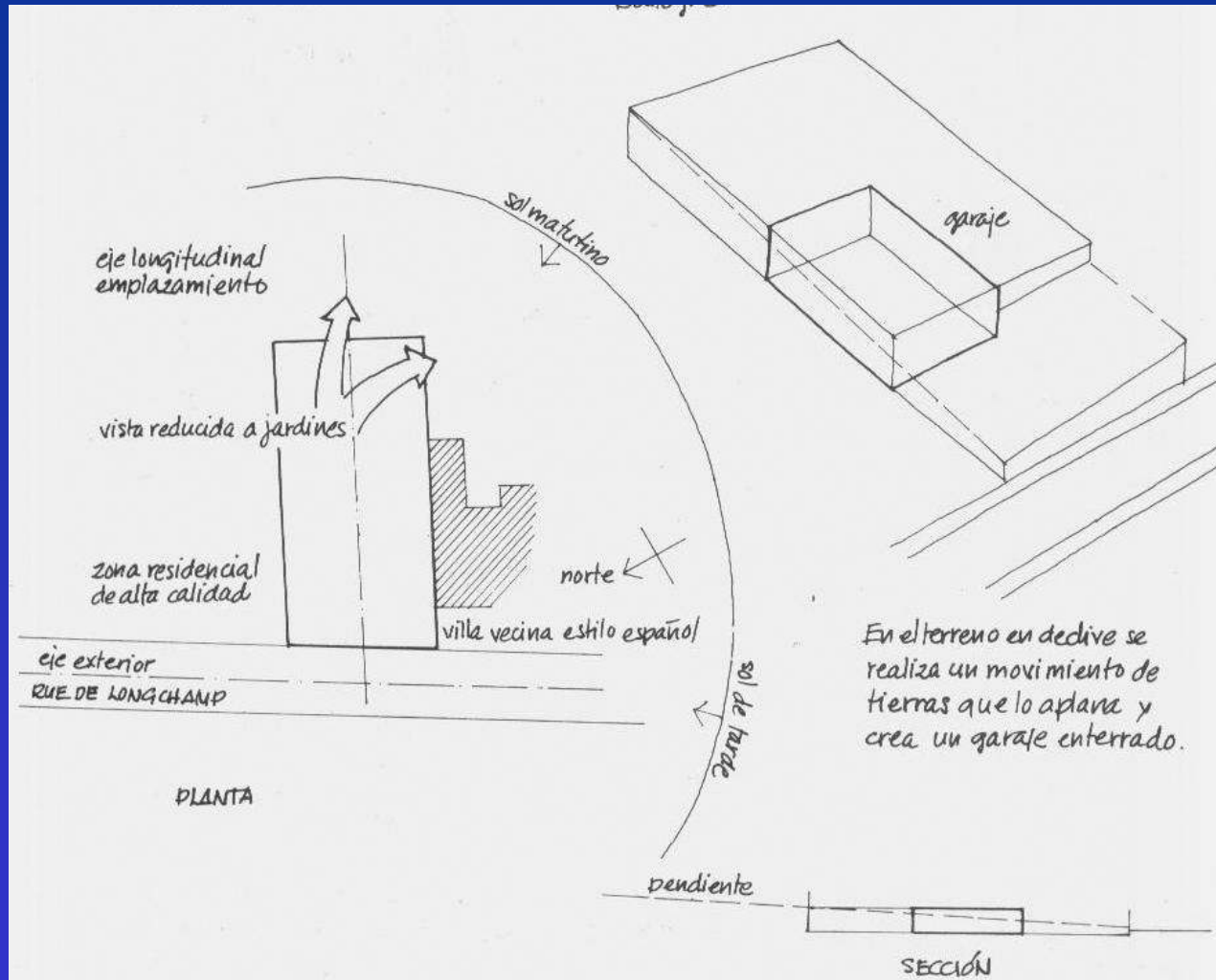


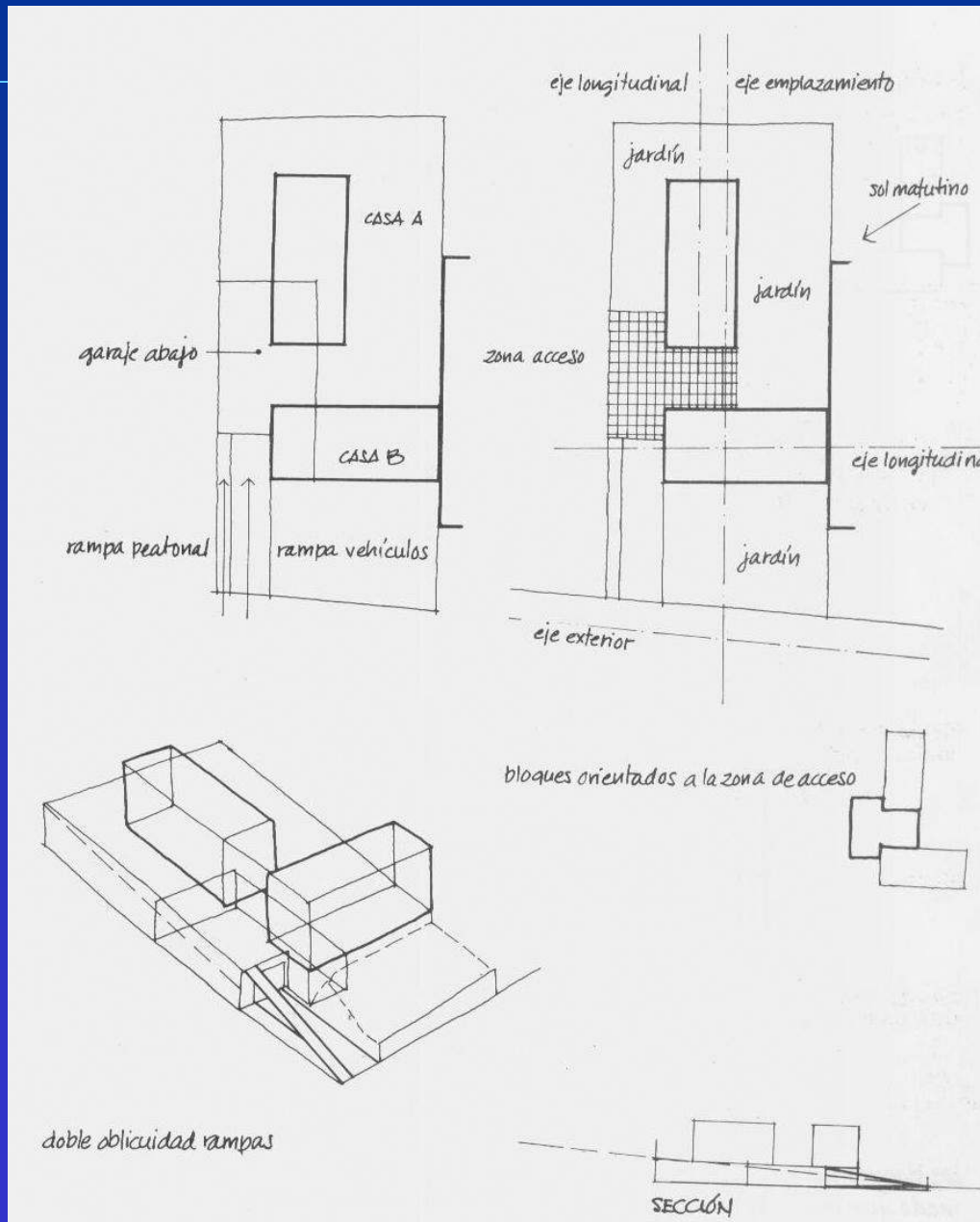




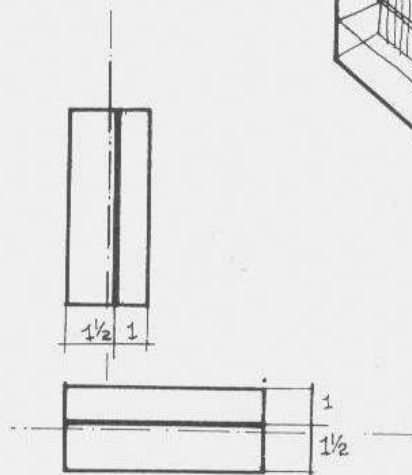
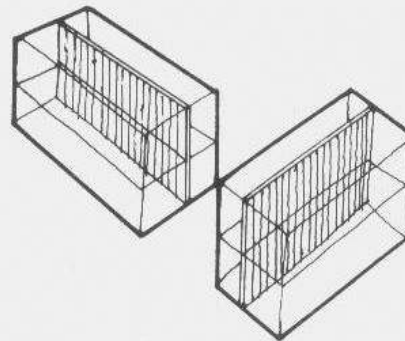
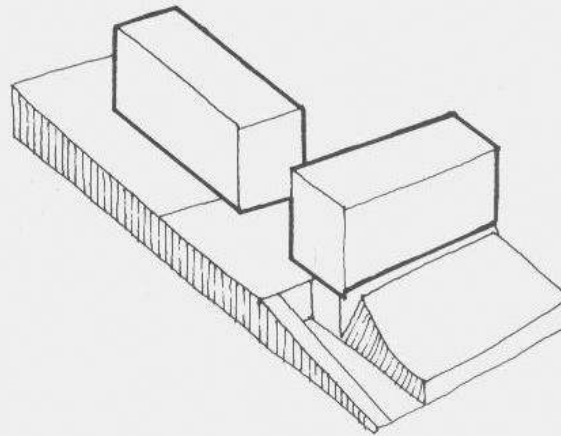
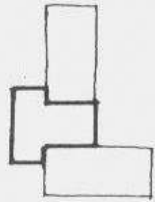




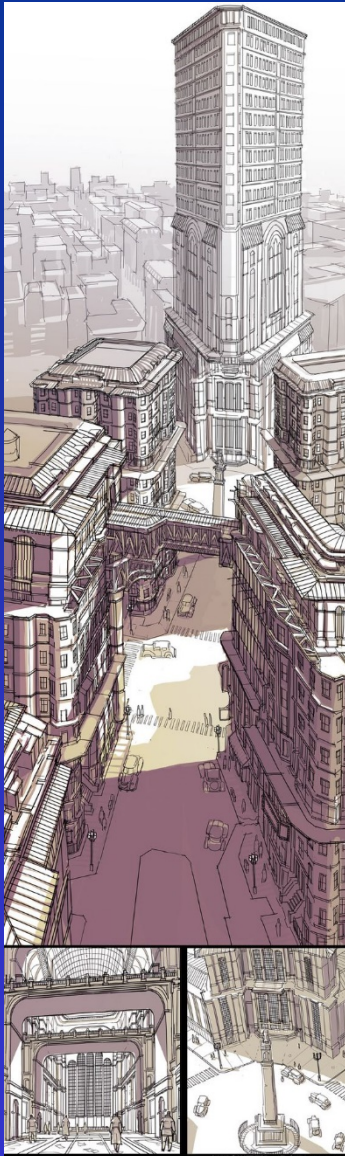




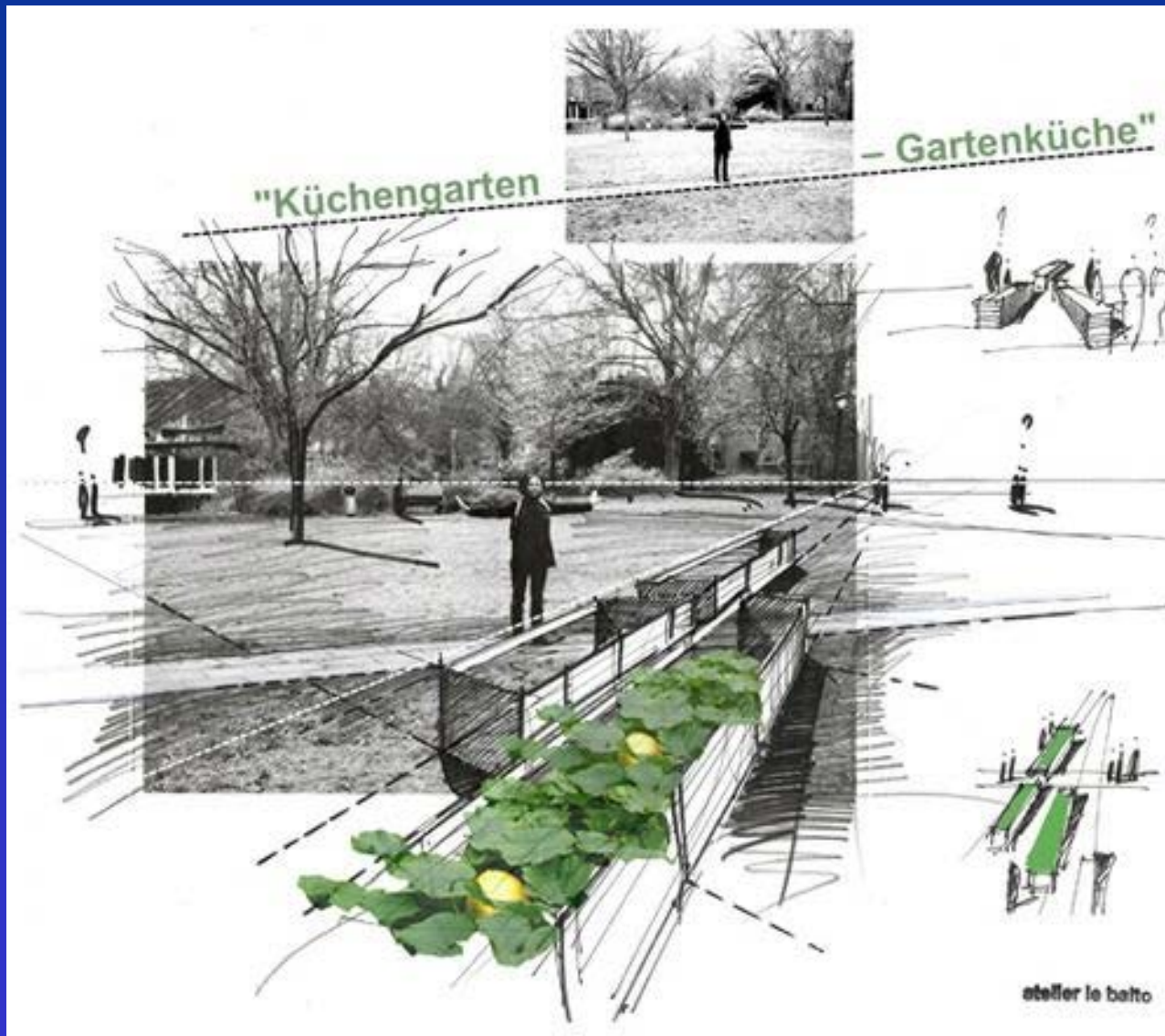












## ANALISIS,

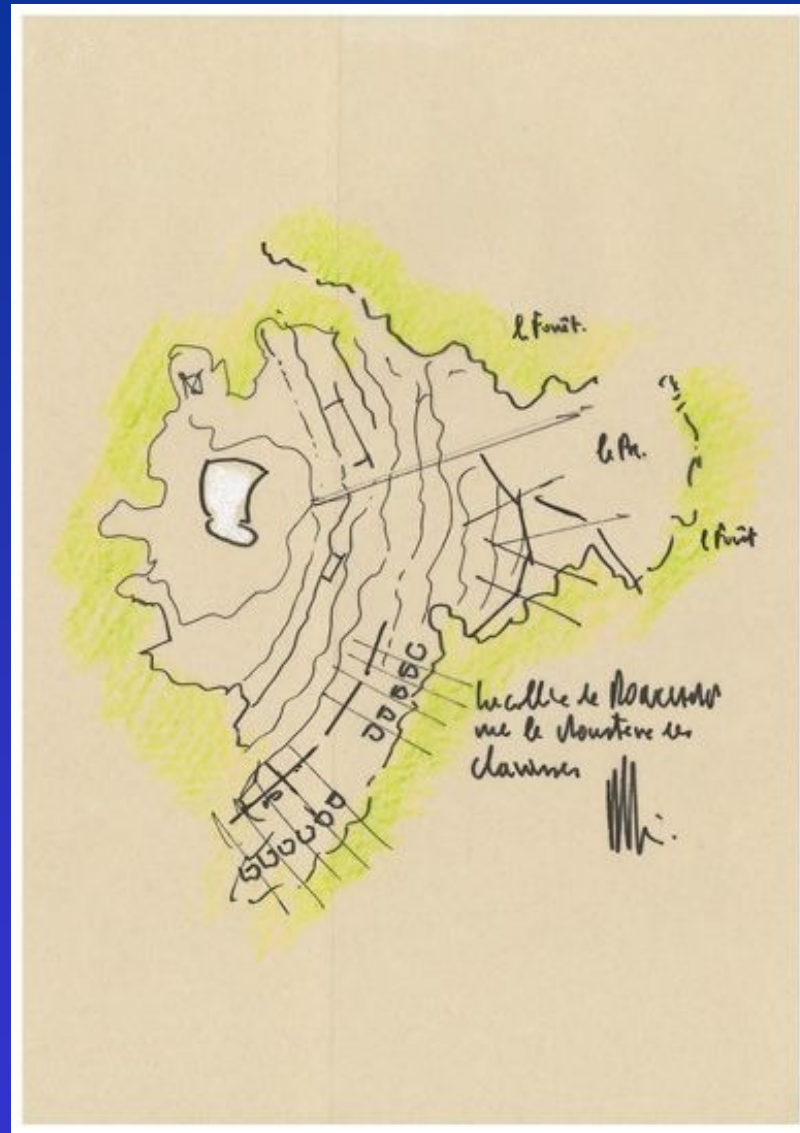
Análisis de contexto:

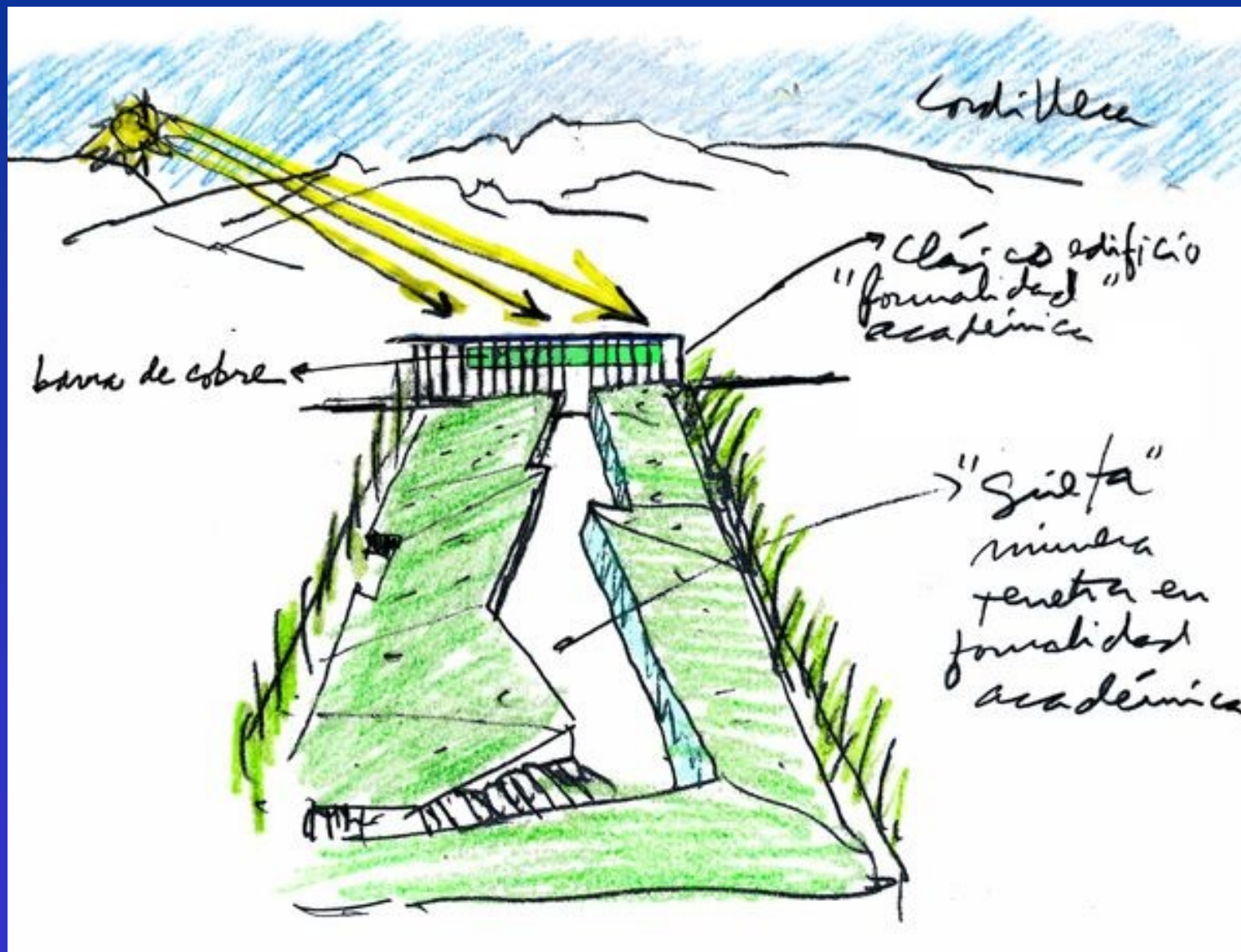
- Análisis del emplazamiento:
  - Orografía, urbanización.
  - Orientación, vientos dominantes, vistas, etc.
  - Aproximación, percepción.

# CONTEXTO SUBURBANO

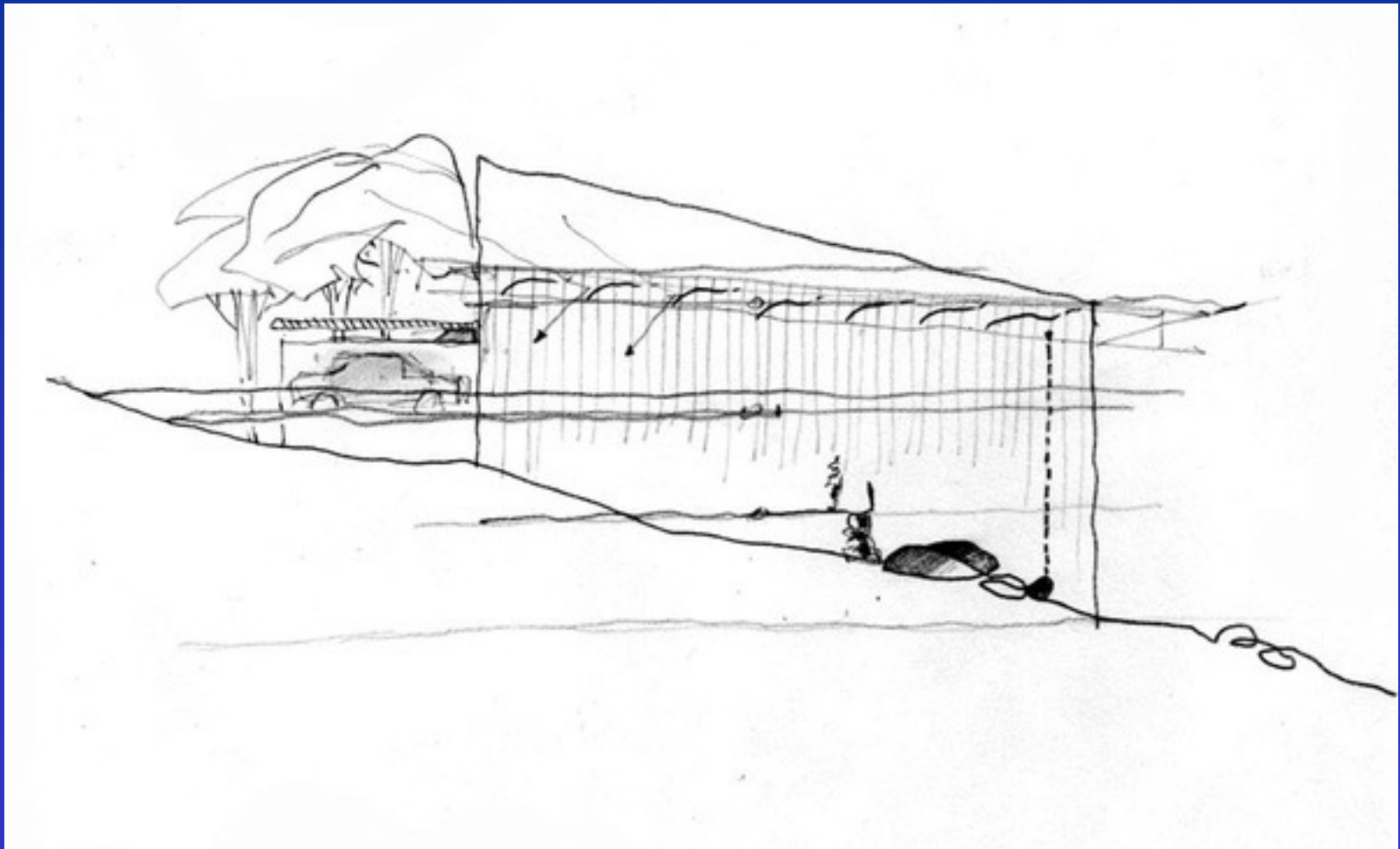
De lo general a lo particular

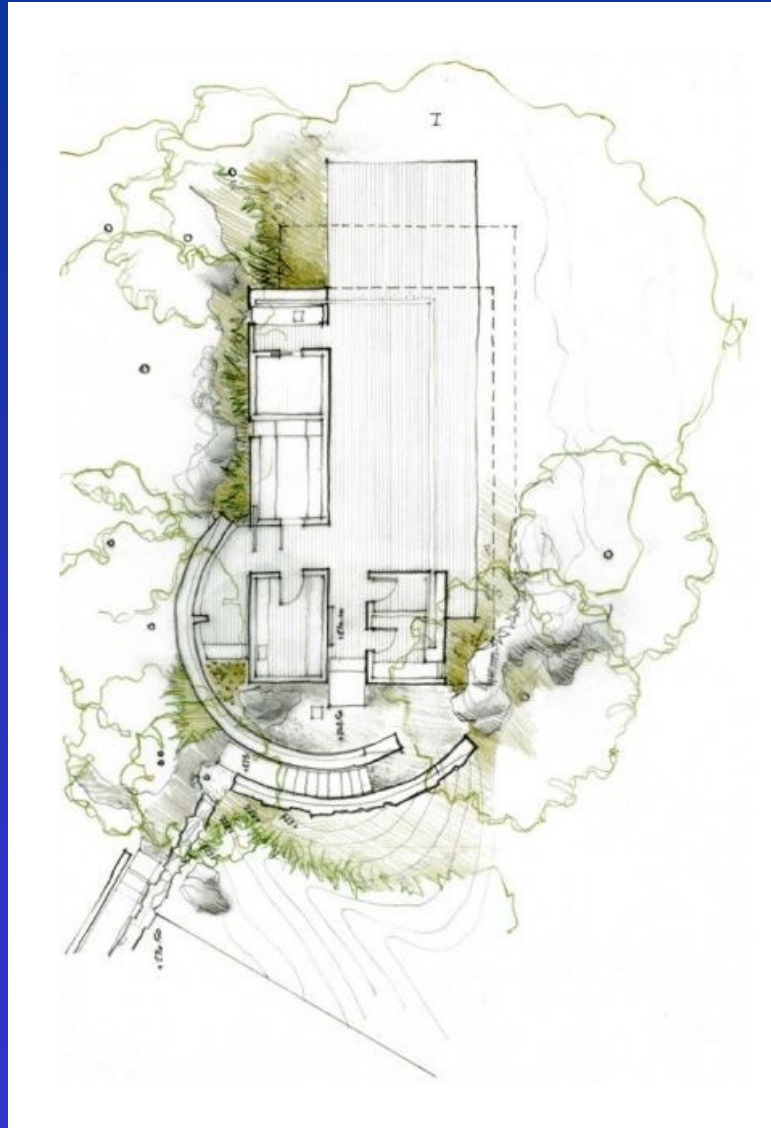


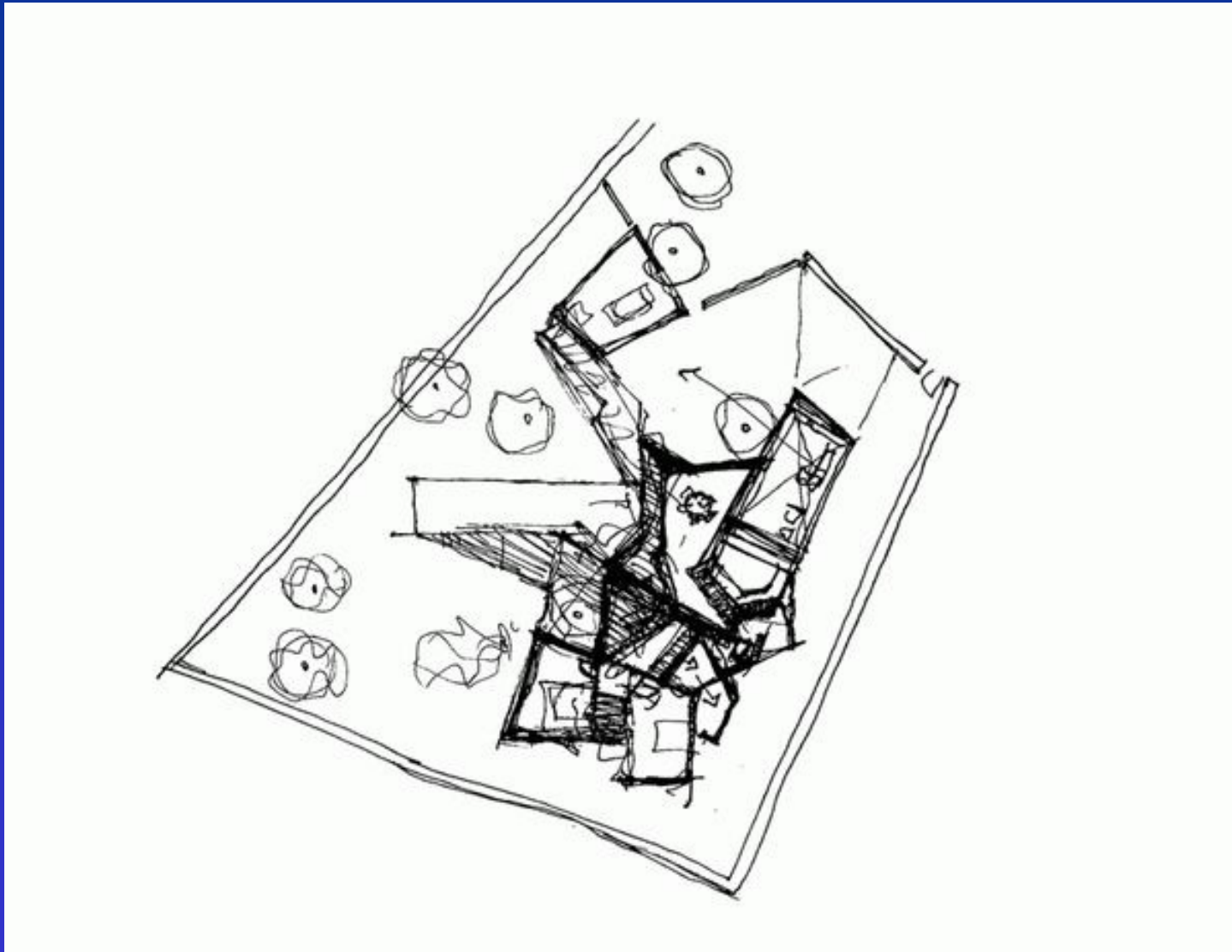


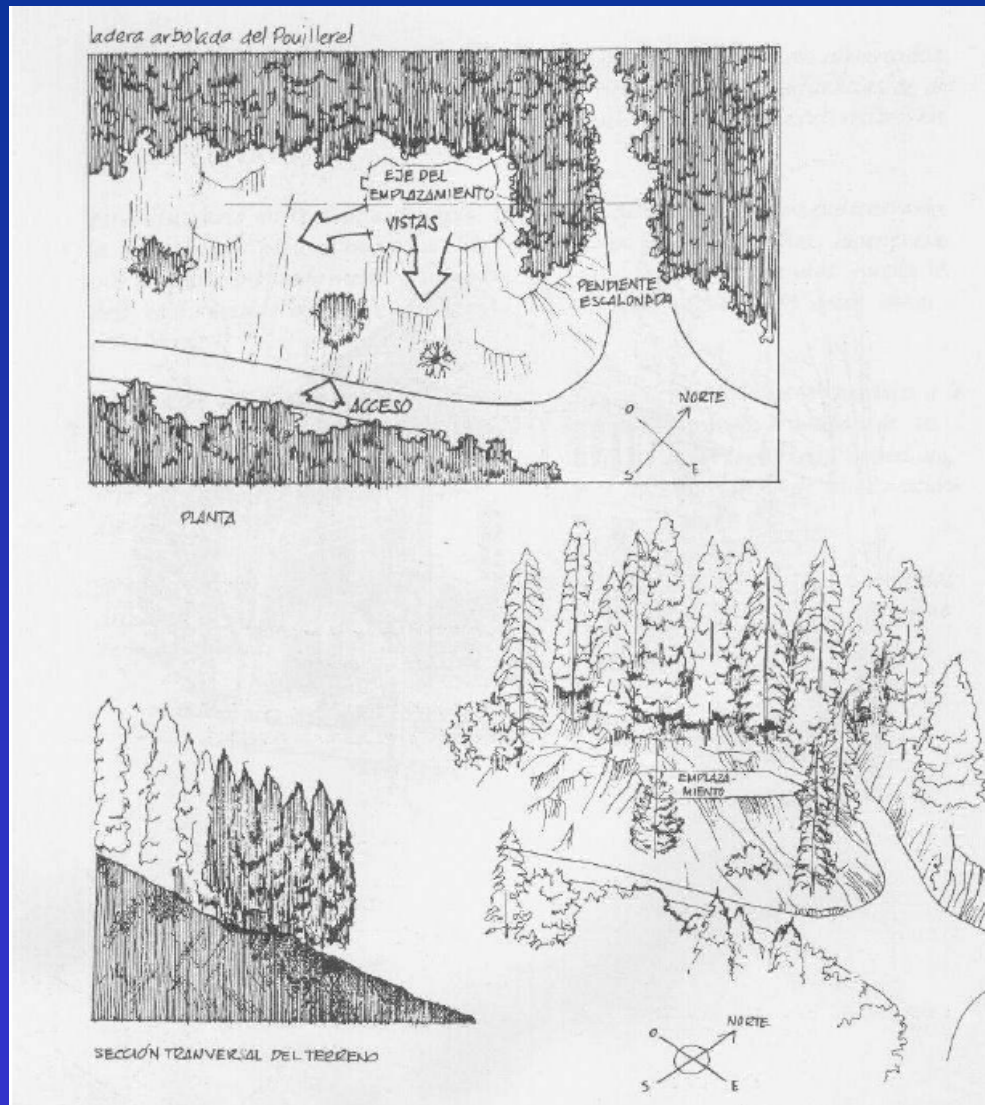




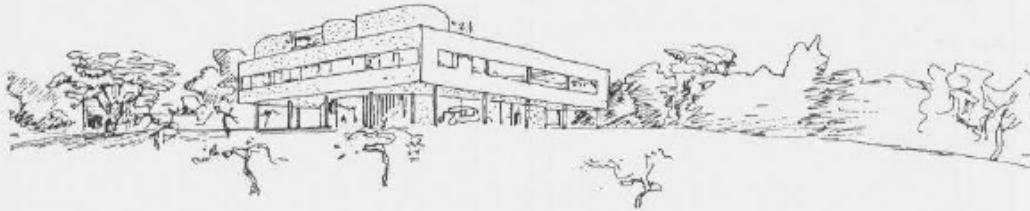




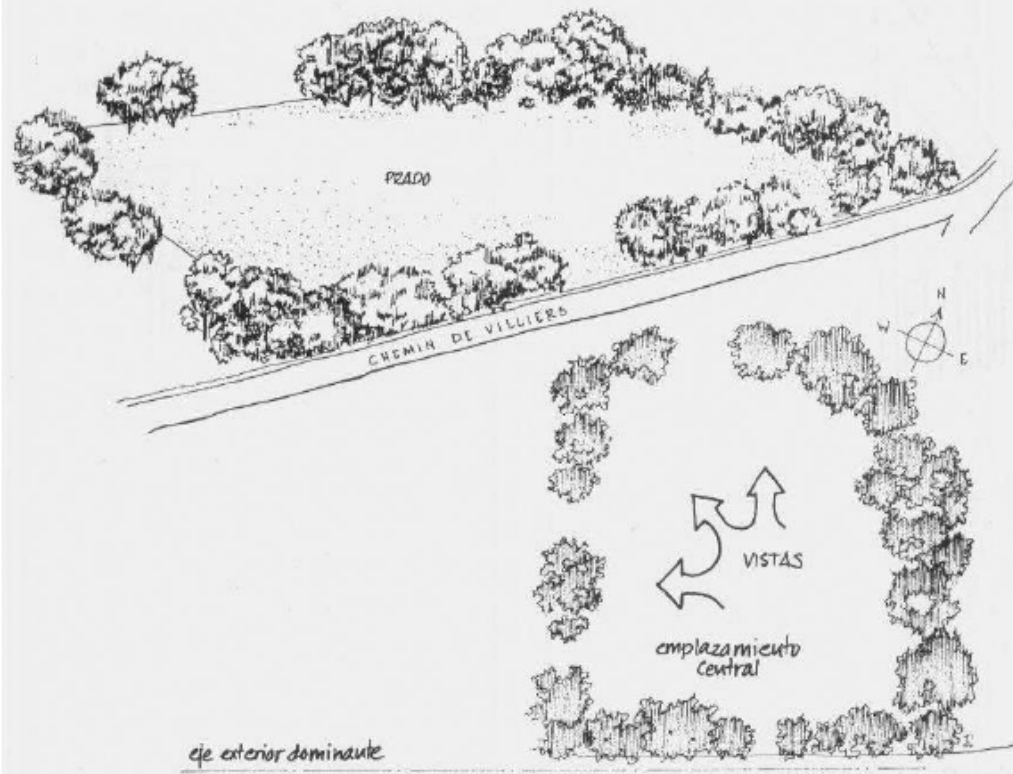




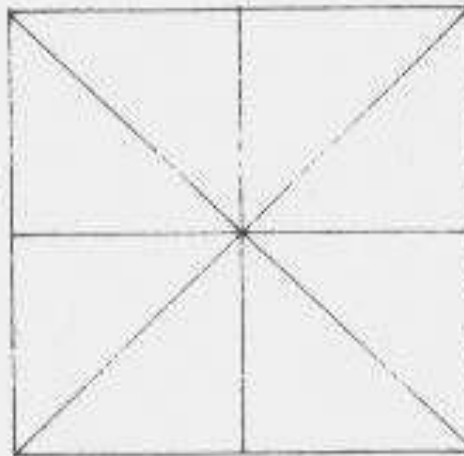




De Le Corbusier, de un dibujo perteneciente a  
Le Corbusier, The Complete Works, 1910-1929

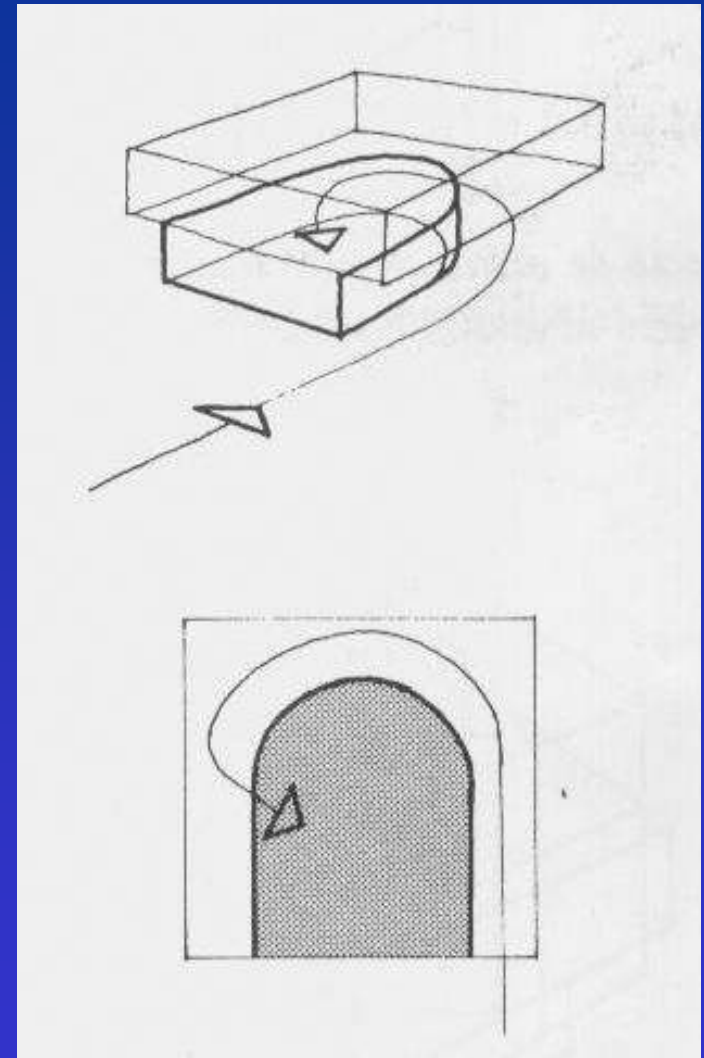
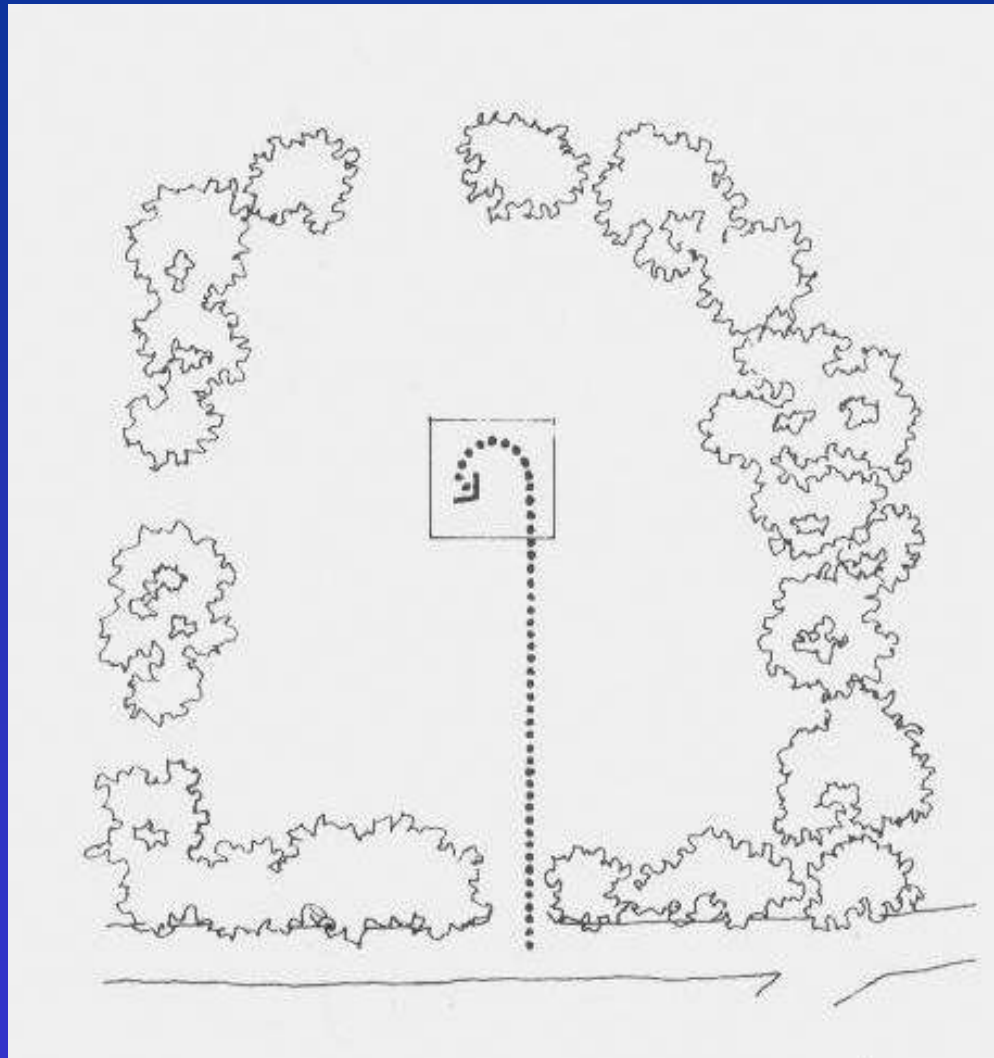


GENÉRICO  
igualdad axial



central









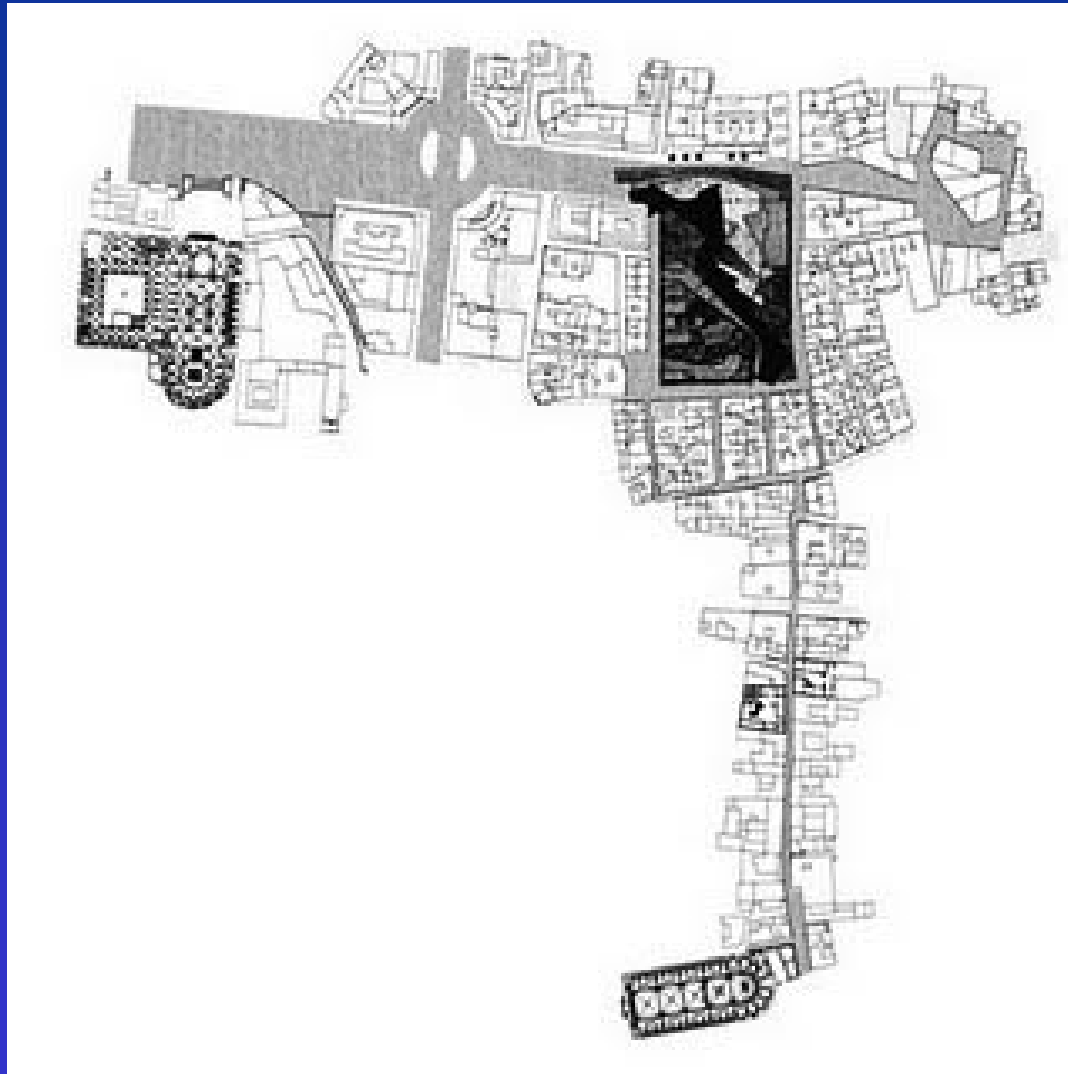




# EJEMPLOS

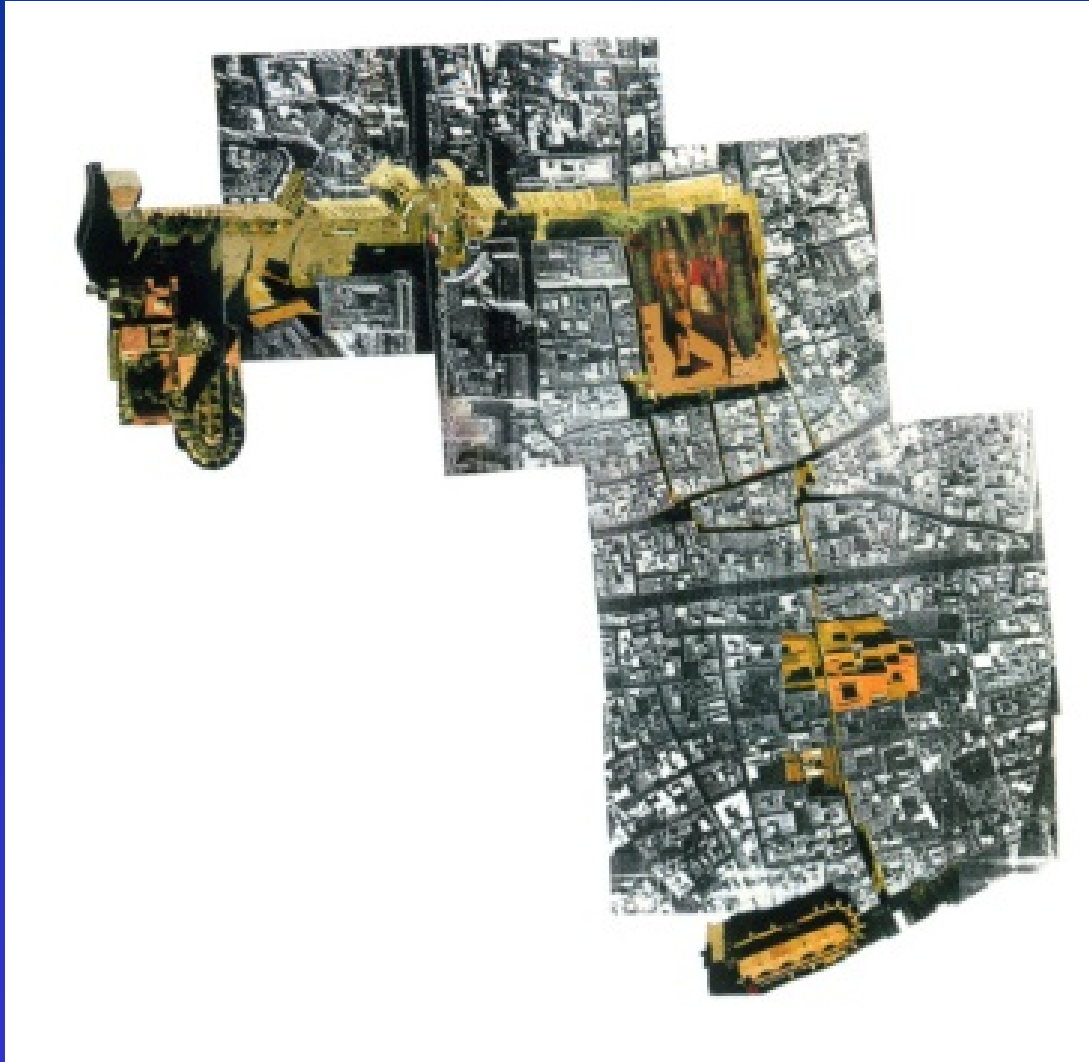


## SANTA CATERINA





## SANTA CATERINA



## SANTA CATERINA



## SANTA CATERINA

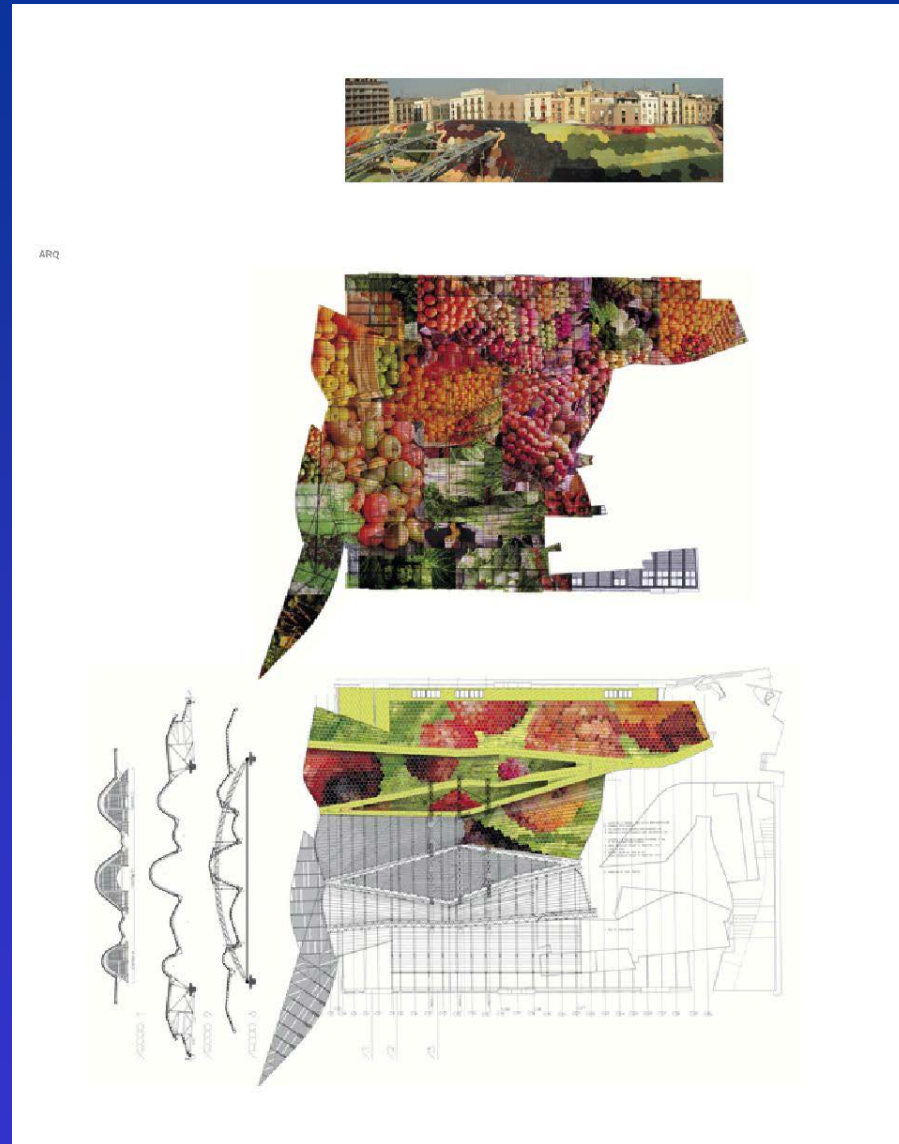


SANTA CATERINA





## SANTA CATERINA

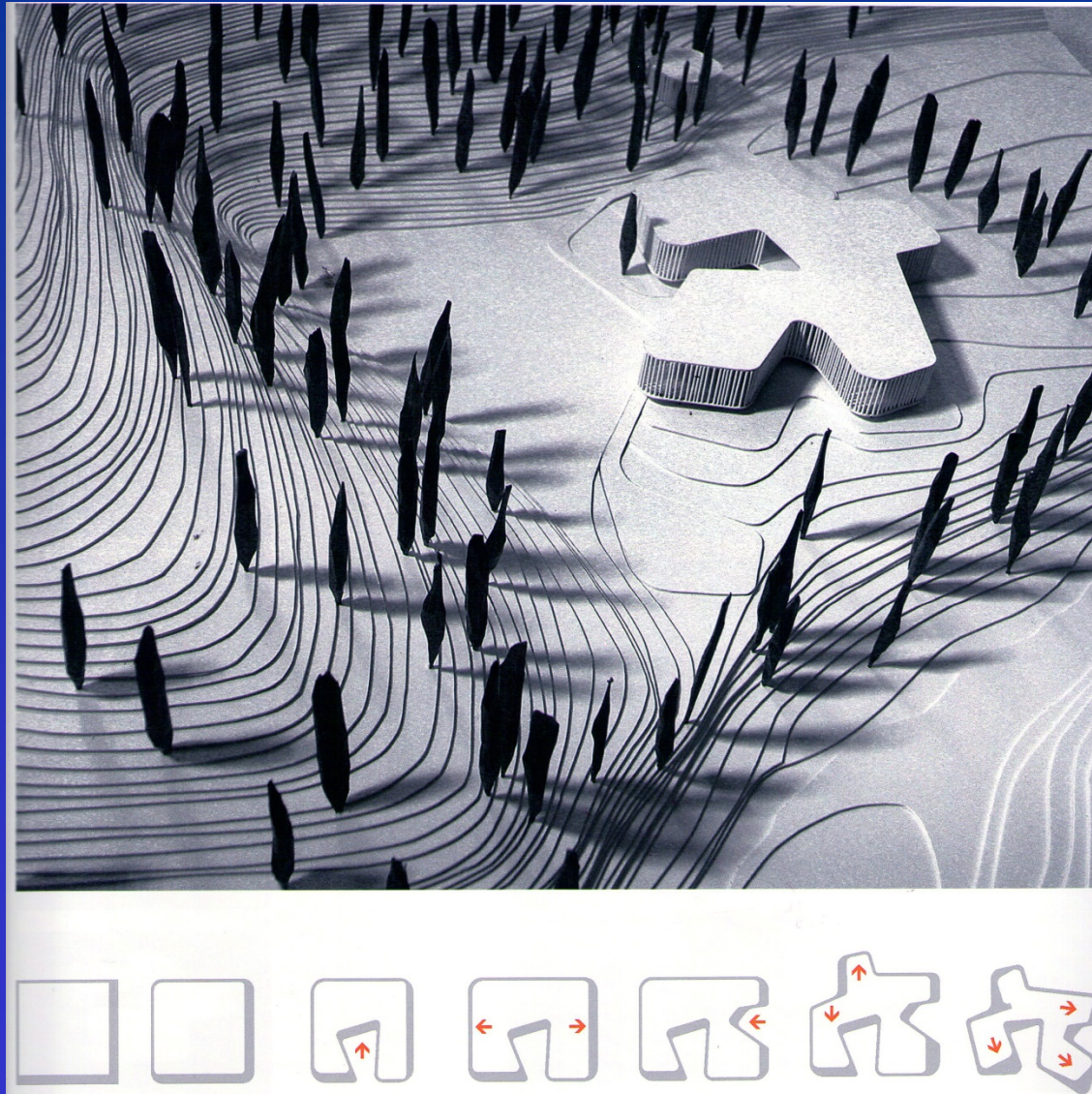




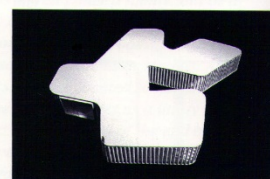
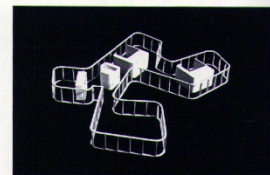
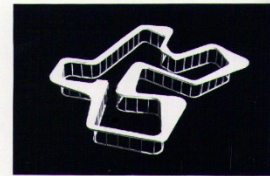
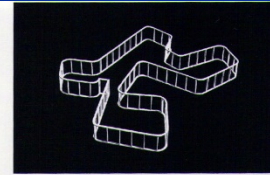
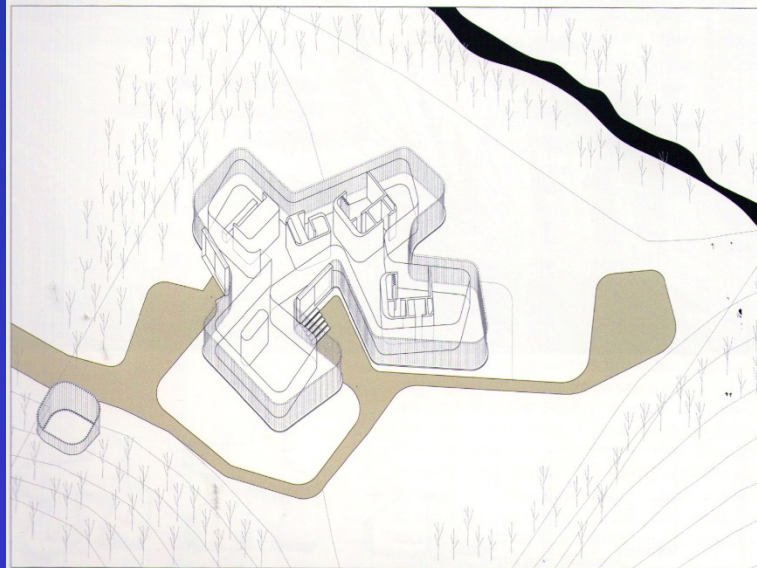
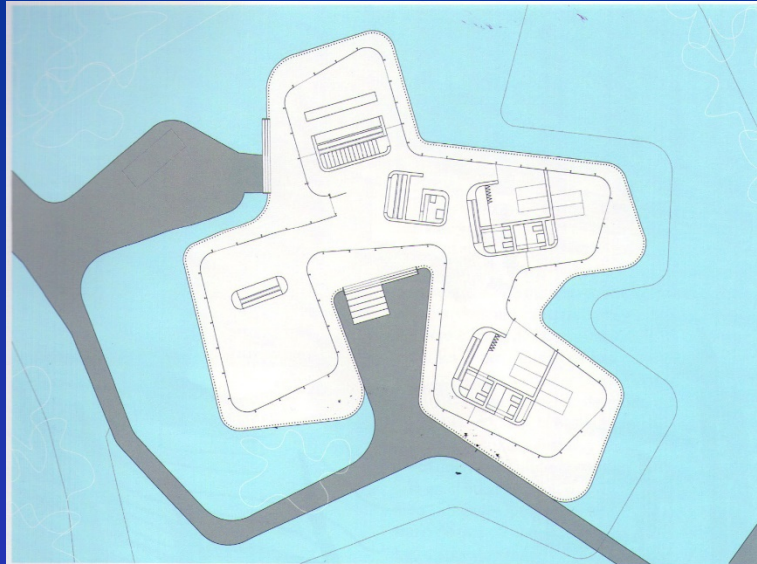


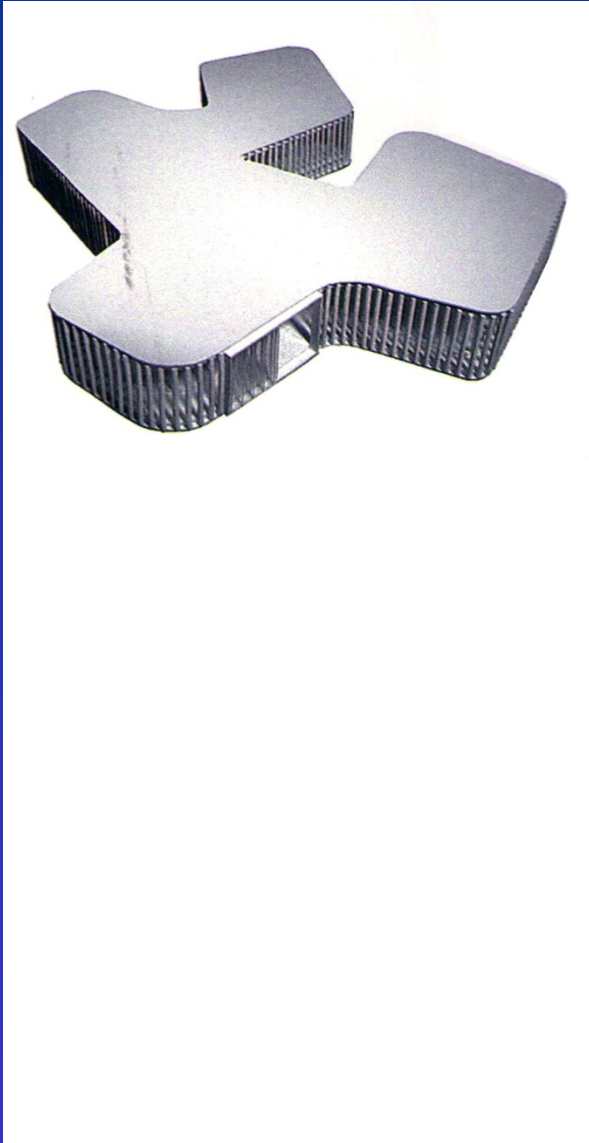












# ANALISIS DE FORMAS ARQUITECTONICAS

## Tema 6.1: ANALISIS CONTEXTO.

Profesor: Luis AGUSTIN.



Escuela de  
Ingeniería y Arquitectura  
Universidad Zaragoza

UNIVERSIDAD  
DE ZARAGOZA

